

For Research Use Only

Anti-Mouse CD8a Rat scFv Antibody, PBS Only

Catalog Number: SF65666-1-PBS



Basic Information

Catalog Number: SF65666-1-PBS	GenBank Accession Number: BC030679	Purification Method: Affinity purification
Size: 100ug, Concentration: 1 mg/ml by Nanodrop;	GeneID (NCBI): 12525	CloneNo.: 53-6.7
Source: Rat	Full Name: CD8 antigen, alpha chain	
Type: scFv		

Applications

Tested Applications:
FC, Indirect ELISA

Species Specificity:
mouse

Background Information

CD8 is a transmembrane glycoprotein composed of two disulfide-linked chains. It can be present as a homodimer of CD8a or as a heterodimer of CD8a and CD8b (PMID: 3264320; 8253791). CD8 is found on most thymocytes. The majority of class I-restricted T cells express mostly the CD8aβ heterodimer while CD8aa homodimers alone have been found on some gut intraepithelial T cells, on some T cell receptor (TCR) γδ T cells and on NK cells (PMID: 2111591; 1831127; 8420975). CD8 acts as a co-receptor that binds to MHC class I and participates in cytotoxic T cell activation (PMID: 8499079). During T cell development, CD8 is required for positive selection of CD4-/CD8+ T cells (PMID: 1968084).

Storage

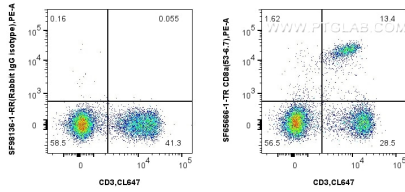
Storage:
Store at -80°C.

Storage Buffer:
PBS only, pH7.3

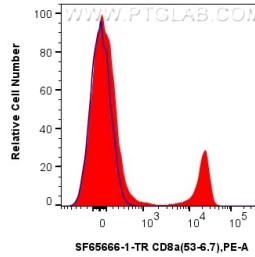
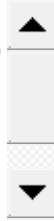
For technical support and original validation data for this product please contact:
T: 1 (888) 4PTGLAB (1-888-478-4522) (toll free in USA), or 1(312) 455-8498 (outside USA) E: proteintech@ptglab.com
W: ptglab.com

This product is exclusively available under Proteintech Group brand and is not available to purchase from any other manufacturer.

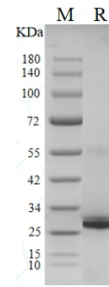
Selected Validation Data



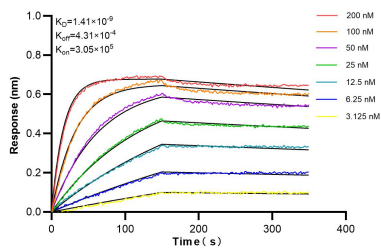
1x10⁶ mouse splenocytes were surface stained with 0.25 ug Anti-Mouse CD8a Rat scFv Antibody (SF65666-1-TR, Clone: 53-6.7) or 0.25 ug Rabbit scFv Isotype Control (SF98136-1-RR, Clone: 240953C9), and PE Anti-6⁺His, His-Tag Rabbit RecAb (PE-FcA98450, Clone: 251107A1). Cells were then stained with CoraLite® Plus 647 Anti-Mouse CD3 (17A2) (CL647-65077, Clone: 17A2). Cells were not fixed. This data was developed using the same antibody clone



1x10⁶ mouse splenocytes were surface stained with 0.25 ug Anti-Mouse CD8a Rat scFv Antibody (SF65666-1-TR, Clone: 53-6.7) (red) or 0.25 ug Rabbit scFv Isotype Control (SF98136-1-RR, Clone: 240953C9) (blue), and PE Anti-6⁺His, His-Tag Rabbit RecAb (PE-FcA98450, Clone: 251107A1). Cells were not fixed. This data was developed using the same antibody clone with SF65666-1-PBS in a different storage buffer formulation.



Purity of Recombinant ScFv antibody (Cat No.: SF65666-1-TR) was determined by SDS-PAGE. The protein was resolved in an SDS-PAGE in reducing (R) and condition and stained using Coomassie blue.



Biolayer interferometry (BLI) kinetic assays of SF65666-1-TR against Mouse CD8a were performed. The affinity constant is 1.41 nM.