

For Research Use Only

# Anti-Human LIGHT/CD258 Rabbit scFv Antibody, PBS Only

Catalog Number: SF98063-1-PBS



## Basic Information

<b>Catalog Number:</b> SF98063-1-PBS	<b>GenBank Accession Number:</b> NM_003807	<b>Purification Method:</b> Affinity purification
<b>Size:</b> 100ug, Concentration: 1 mg/ml by Nanodrop;	<b>GeneID (NCBI):</b> 8740	<b>CloneNo.:</b> 240694D7
<b>Source:</b> Rabbit	<b>Full Name:</b> tumor necrosis factor (ligand) superfamily, member 14	
<b>Type:</b> scFv	<b>Calculated MW:</b> 26KD	
<b>Immunogen Catalog Number:</b> EG32095		

## Applications

**Tested Applications:**  
FC, Indirect ELISA

**Species Specificity:**  
human

## Background Information

LIGHT, also known as TNFSF14, HVEM, or CD258, is a type II transmembrane protein that belongs to the TNF superfamily (PMID: 9462508). It is predominantly expressed in lymphoid tissues and produced by activated T cells and immature dendritic cells (DCs) (PMID: 9462508; 10754304). Through its two primary functional receptors HVEM (TNFRSF14) and lymphotoxin  $\beta$  receptor (LT $\beta$ R), LIGHT signaling is involved in development and maintenance of lymphoid tissues, as well as innate and adaptive immune responses (PMID: 24575096; 26720335). In addition to the membrane form, LIGHT can also exist as a soluble form generated by cleavage of the extracellular portion of the membrane form.

## Storage

**Storage:**  
Store at -80°C.

**Storage Buffer:**  
PBS only, pH7.3

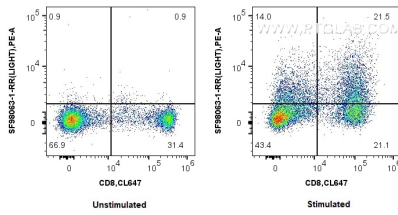
For technical support and original validation data for this product please contact:

T: 1 (888) 4PTGLAB (1-888-478-4522) (toll free in USA), or 1(312) 455-8498 (outside USA)

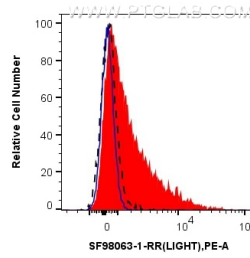
E: [proteintech@ptglab.com](mailto:proteintech@ptglab.com)  
W: [ptglab.com](http://ptglab.com)

**This product is exclusively available under Proteintech Group brand and is not available to purchase from any other manufacturer.**

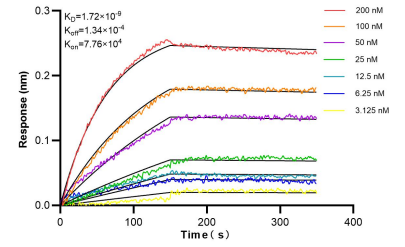
## Selected Validation Data



1x10<sup>6</sup> untreated or PMA and ionomycin treated human PBMCs were surface stained with 0.25 ug Anti-Human LIGHT/CD258 Rabbit scFv Antibody (SF98063-1-RR, Clone: 240694D7) and PE Anti-6<sup>th</sup>His, His-Tag Rabbit RecAb (PE-FcA98450, Clone: 251107A1). Cells were then stained with CL647 Anti-Human CD8. Cells were not fixed. This data was developed using the same antibody clone with SF98063-1-PBS in a different storage buffer formulation.



1x10<sup>6</sup> PMA and ionomycin treated human PBMCs were surface stained with 0.25 ug anti-human LIGHT/CD258 Recombinant Antibody (SF98063-1-RR, Clone: 240694D7) (red) or 0.25 ug Rabbit IgG Isotype Control Rabbit scFv Antibody (SF98136-1-RR, Clone: 240953C9) (blue), and PE Anti-6<sup>th</sup>His, His-Tag Rabbit RecAb (PE-FcA98450, Clone: 251107A1). 1x10<sup>6</sup> untreated human PBMCs were surface stained with 0.25 ug anti-human LIGHT/CD258 Recombinant Antibody



Bioluminescence resonance energy transfer (BRET) kinetic assays of SF98063-1-RR against Human LIGHT/CD258 were performed. The affinity constant is 1.72 nM.