

For Research Use Only

Anti-Human LIGHT/CD258 Rabbit scFv Antibody

Catalog Number: SF98063-1-RR



Basic Information

Catalog Number:

SF98063-1-RR

GenBank Accession Number:

NM_003807

Purification Method:

Affinity purification

Size:

100ug, Concentration: 1000 µg/ml by 8740

GeneID (NCBI):

8740

CloneNo.:

240694D7

Nanodrop;

Full Name:

tumor necrosis factor (ligand) superfamily, member 14

Recommended Dilutions:

FC: 0.25 ug per 10⁶ cells in a 100 µl suspension

Source:

Rabbit

Type:

scFv

Calculated MW:

26KD

Immunogen Catalog Number:

EG32095

Applications

Tested Applications:

FC

Positive Controls:

FC : PMA and ionomycin treated human PBMCs,

Species Specificity:

human

Background Information

LIGHT, also known as TNFSF14, HVEM, or CD258, is a type II transmembrane protein that belongs to the TNF superfamily (PMID: 9462508). It is predominantly expressed in lymphoid tissues and produced by activated T cells and immature dendritic cells (DCs) (PMID: 9462508; 10754304). Through its two primary functional receptors HVEM (TNFRSF14) and lymphotoxin β receptor (LTβR), LIGHT signaling is involved in development and maintenance of lymphoid tissues, as well as innate and adaptive immune responses (PMID: 24575096; 26720335). In addition to the membrane form, LIGHT can also exist as a soluble form generated by cleavage of the extracellular portion of the membrane form.

Storage

Storage:

Store at 2-8°C. Stable for one year after shipment.

Storage Buffer:

50mM HEPES, 150mM NaCl, 5mM EDTA, 2mM TCEP, 5% Trehalose, 0.01% Proclin300, pH7.3

*** 20ul sizes contain 0.1% BSA

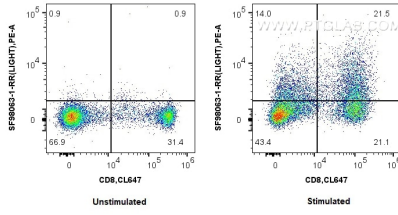
For technical support and original validation data for this product please contact:

T: 1 (888) 4PTGLAB (1-888-478-4522) (toll free in USA), or 1(312) 455-8498 (outside USA)

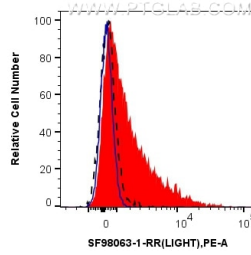
E: proteintech@ptglab.com
W: ptglab.com

This product is exclusively available under Proteintech Group brand and is not available to purchase from any other manufacturer.

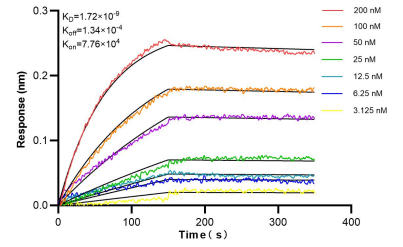
Selected Validation Data



1x10⁶ untreated or PMA and ionomycin treated human PBMCs were surface stained with 0.25 ug Anti-Human LIGHT/CD258 Rabbit scFv Antibody (SF98063-1-RR, Clone: 240694D7) and PE Anti-6thHis, His-Tag Rabbit RecAb (PE-FcA98450, Clone: 251107A1). Cells were then stained with CL647 Anti-Human CD8. Cells were not fixed.



1x10⁶ PMA and ionomycin treated human PBMCs were surface stained with 0.25 ug anti-human LIGHT/CD258 Recombinant Antibody (SF98063-1-RR, Clone: 240694D7) (red) or 0.25 ug Rabbit IgG Isotype Control Rabbit scFv Antibody (SF98136-1-RR, Clone: 240953C9) (blue), and PE Anti-6thHis, His-Tag Rabbit RecAb (PE-FcA98450, Clone: 251107A1). 1x10⁶ untreated human PBMCs were surface stained with 0.25 ug anti-human LIGHT/CD258 Recombinant Antibody



Bioluminescence Interferometry (BLI) kinetic assays of SF98063-1-RR against Human LIGHT/CD258 were performed. The affinity constant is 1.72 nM.