

For Research Use Only

Anti-Human CD9 Rabbit scFv Antibody, PBS Only

Catalog Number:SF98095-1-PBS



Basic Information

Catalog Number:

SF98095-1-PBS

Size:

100ug, Concentration: 1 mg/ml by
Nanodrop;

Source:

Rabbit

Type:

scFv

Immunogen Catalog Number:

EG1037

GenBank Accession Number:

NM_001769.4

GeneID (NCBI):

928

Full Name:

CD9 molecule

Calculated MW:

25 kDa

Purification Method:

Affinity purification

CloneNo.:

240830E6

Applications

Tested Applications:

FC, Indirect ELISA

Species Specificity:

human

Background Information

The cell-surface molecule CD9, a member of the transmembrane-4 superfamily, interacts with the integrin family and other membrane proteins, and is postulated to participate in cell migration and adhesion. Expression of CD9 enhances membrane fusion between muscle cells and promotes viral infection in some cells (PMID:10459022). It is often used as a mesenchymal stem cell marker (PMID:18005405).

Storage

Storage:

Store at -80°C.

Storage Buffer:

PBS only, pH7.3

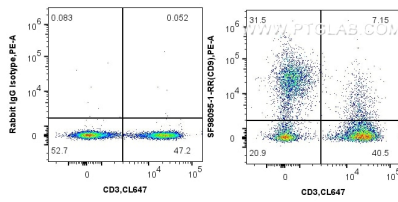
For technical support and original validation data for this product please contact:

T: 1 (888) 4PTGLAB (1-888-478-4522) (toll free
in USA), or 1(312) 455-8498 (outside USA)

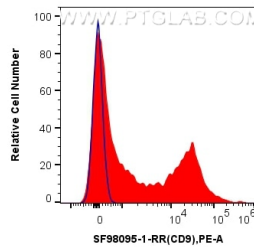
E: proteintech@ptglab.com
W: ptglab.com

This product is exclusively available under Proteintech Group brand and is not available to purchase from any other manufacturer.

Selected Validation Data



1x10⁶ human PBMCs were surface stained with 0.25 ug Anti-Human CD9 Rabbit scFv Antibody (SF98095-1-RR, Clone: 240830E6) or Rabbit IgG Isotype Control RecAb (98136-1-RR, Clone: 240953C9), and PE Anti-GGGGS Linker Rabbit Recombinant Antibody. Cells were then stained with CoraLite® Plus 647 Anti-Human CD3 (OKT3) Mouse IgG2a Recombinant Antibody. Cells were incubated with FC Receptor Block prior to staining. Cells were not fixed. This data was



1x10⁶ human PBMCs were surface stained with 0.25 ug Anti-Human CD9 Rabbit scFv Antibody (SF98095-1-RR, Clone: 240830E6) (red) or Rabbit IgG Isotype Control RecAb (98136-1-RR, Clone: 240953C9) (blue), and PE Anti-GGGGS Linker Rabbit Recombinant Antibody. Cells were incubated with FC Receptor Block prior to staining. Cells were not fixed. This data was developed using the same antibody clone with SF98095-1-PBS in a different storage buffer formulation.

