

For Research Use Only

Anti-Human CD9 Rabbit scFv Antibody

Catalog Number: SF98095-1-RR



Basic Information

Catalog Number:

SF98095-1-RR

GenBank Accession Number:

NM_001769.4

Purification Method:

Affinity purification

Size:

100ug, Concentration: 1000 ug/ml by 928

GeneID (NCBI):

928

CloneNo.:

240830E6

Nanodrop;

Full Name:

CD9 molecule

Recommended Dilutions:

FC: 0.25 ug per 10⁶ cells in a 100 µl suspension

Source:

Rabbit

Calculated MW:

25 kDa

Type:

scFv

Immunogen Catalog Number:

EG1037

Applications

Tested Applications:

FC

Positive Controls:

FC : human PBMCs,

Species Specificity:

human

Background Information

The cell-surface molecule CD9, a member of the transmembrane-4 superfamily, interacts with the integrin family and other membrane proteins, and is postulated to participate in cell migration and adhesion. Expression of CD9 enhances membrane fusion between muscle cells and promotes viral infection in some cells (PMID:10459022). It is often used as a mesenchymal stem cell marker (PMID:18005405).

Storage

Storage:

Store at 2-8°C. Stable for one year after shipment.

Storage Buffer:

50mM HEPES, 150mM NaCl, 5mM EDTA, 2mM TCEP, 5% Trehalose, 0.01% Proclin300, pH7.3

*** 20ul sizes contain 0.1% BSA

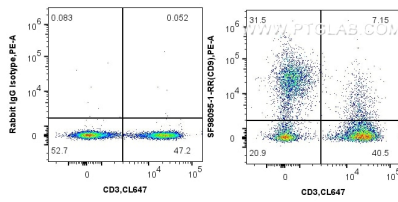
For technical support and original validation data for this product please contact:

T: 1 (888) 4PTGLAB (1-888-478-4522) (toll free in USA), or 1(312) 455-8498 (outside USA)

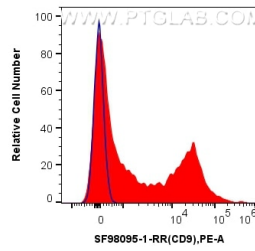
E: proteintech@ptglab.com
W: ptglab.com

This product is exclusively available under Proteintech Group brand and is not available to purchase from any other manufacturer.

Selected Validation Data



1x10⁶ human PBMCs were surface stained with 0.25 ug Anti-Human CD9 Rabbit scFv Antibody (SF98095-1-RR, Clone: 240830E6) or Rabbit IgG Isotype Control RecAb (98136-1-RR, Clone: 240953C9), and PE Anti-GGGGS Linker Rabbit Recombinant Antibody. Cells were then stained with CoralLite® Plus 647 Anti-Human CD3 (OKT3) Mouse IgG2a Recombinant Antibody. Cells were incubated with FC Receptor Block prior to staining. Cells were not fixed.



1x10⁶ human PBMCs were surface stained with 0.25 ug Anti-Human CD9 Rabbit scFv Antibody (SF98095-1-RR, Clone: 240830E6) (red) or Rabbit IgG Isotype Control RecAb (98136-1-RR, Clone: 240953C9) (blue), and PE Anti-GGGGS Linker Rabbit Recombinant Antibody. Cells were incubated with FC Receptor Block prior to staining. Cells were not fixed.