

For Research Use Only

# Rabbit scFv Isotype Control, PBS Only

Catalog Number: SF98136-1-PBS



## Basic Information

Catalog Number:

SF98136-1-PBS

Size:

100ug, Concentration: 1 mg/ml by Nanodrop;

Source:

Rabbit

Type:

scFv

GenBank Accession Number:

GeneID (NCBI):

Full Name:

Purification Method:

Affinity purification

CloneNo.:

240953C9

## Applications

Tested Applications:

FC, Indirect ELISA

Species Specificity:

n/a

## Background Information

This product is an isotype control antibody, which is used to estimate the non-specific binding of target primary antibodies due to Fc receptor binding or other protein-protein interactions. An isotype control antibody should have the same immunoglobulin type and be used at the same concentration as the test antibody.

## Storage

Storage:

Store at -80°C.

Storage Buffer:

PBS only, pH7.3

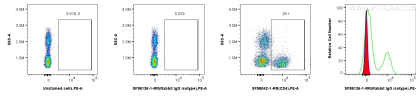
For technical support and original validation data for this product please contact:

T: 1 (888) 4PTGLAB (1-888-478-4522) (toll free in USA), or 1(312) 455-8498 (outside USA)

E: [proteintech@ptglab.com](mailto:proteintech@ptglab.com)  
W: [ptglab.com](http://ptglab.com)

This product is exclusively available under Proteintech Group brand and is not available to purchase from any other manufacturer.

## Selected Validation Data



1x10<sup>6</sup> human PBMCs were surface stained with 0.25 ug Rabbit scFv Isotype Control (SF98136-1-RR, Clone: 240953C9) (red in histogram) or 0.25 ug Anti-Human CD4 Rabbit scFv Antibody (SF98042-1-RR, Clone: 240427E12) (green in histogram) or unstained (blue in histogram), and PE Anti-6<sup>+</sup>His, His-Tag Rabbit RecAb (PE-FcA98450, Clone: 251107A1). Cells were incubated with FC Receptor Block prior to staining. Cells were not fixed. This data was developed

