

For Research Use Only

Anti-Human CD19 Rabbit scFv Antibody, PBS Only

Catalog Number: SF98560-1-PBS



Basic Information

Catalog Number: SF98560-1-PBS	GenBank Accession Number: BC006338	Purification Method: Affinity purification
Size: 100ug, Concentration: 1 mg/ml by Nanodrop;	GeneID (NCBI): 930	CloneNo.: 250499A2
Source: Rabbit	ENSEMBL Gene ID: ENSG00000177455	
Type: scFv	Full Name: CD19 molecule	
Immunogen Catalog Number: EG3335	Calculated MW: 556 aa, 61 kDa	

Applications

Tested Applications:
FC, Indirect ELISA

Species Specificity:
human

Background Information

CD19 is a 95 kDa type I transmembrane glycoprotein belonging to the immunoglobulin superfamily (PMID: 2472450). It is expressed by B cells and follicular dendritic cells. CD19 is up-regulated at the step of B-lineage commitment during the differentiation of the hematopoietic stem cell, it remains on during subsequent stages of differentiation until finally down-regulated during terminal differentiation into plasma cells (PMID: 8528044). CD19 is involved in B cell development, activation and differentiation. It is the dominant component for the signaling complex on B cells that includes CD21 (CR2), CD81 (TAPA-1) and CD225 and acts as a critical co-receptor for BCR signal transduction (PMID: 23210908).

Storage

Storage:
Store at -80°C.

Storage Buffer:
PBS only, pH7.3

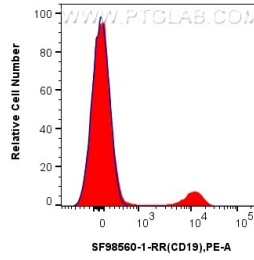
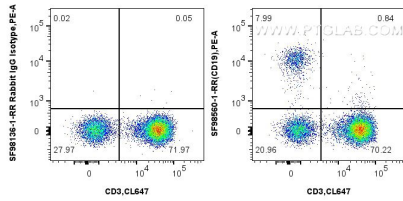
For technical support and original validation data for this product please contact:

T: 1 (888) 4PTGLAB (1-888-478-4522) (toll free
in USA), or 1(312) 455-8498 (outside USA)

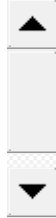
E: proteintech@ptglab.com
W: ptglab.com

This product is exclusively available under Proteintech Group brand and is not available to purchase from any other manufacturer.

Selected Validation Data



1x10⁶ human PBMCs were surface stained with 0.25 ug CD19 Recombinant Antibody (SF98560-1-RR, Clone: 250499A2) or 0.25 ug Rabbit scFv Isotype Control (SF98136-1-RR, Clone: 240953C9), and PE Anti-6³⁵His, His-Tag Rabbit RecAb (PE-FcA98450, Clone:251107A1). Cells were then stained with Coralite® Plus 647 Anti-Human CD3. Cells were not fixed. Lymphocytes were gated. This data was developed using the same antibody clone with SF98560-1-PBS in



1x10⁶ human PBMCs were surface stained with 0.25 ug CD19 Recombinant Antibody (SF98560-1-RR, Clone: 250499A2) (red) or 0.25 ug Rabbit scFv Isotype Control (SF98136-1-RR, Clone: 240953C9) (blue), and PE Anti-6³⁵His, His-Tag Rabbit RecAb (PE-FcA98450, Clone: 251107A1). Cells were not fixed. Lymphocytes were gated. This data was developed using the same antibody clone with SF98560-1-PBS in a different storage buffer formulation.