

chromotek® SUMO1-Trap Magnetic Agarose

Product Code: s1tma

Product Information

Description: The ChromoTek SUMO1-Trap Magnetic Agarose consists of an anti-SUMO1 NANOBODY®/VHH, which is coupled to magnetic agarose beads. It can be used for the immunoprecipitation of SUMO1 proteins from cell extracts of various organisms.

Applications: IP, Co-IP

Specificity/Target: Binds specifically to human SUMO1 (Small Ubiquitin-like Modifier 1). The ChromoTek SUMO1-Trap Agarose will immunoprecipitate both monovalent SUMO1 and SUMO1 chains formed by the process of SUMOylation. In addition to human SUMO1, it will also bind SUMO1 homologs from other mammals.

Binding capacity: 20 µg SUMO1 fusion protein (40 kDa) per 25 µl bead slurry

Bead Size: 40 µm (cross-linked 6 % magnetic agarose beads)

Elution Buffer: 2x SDS-sample buffer (Lämmli), 200 mM glycine pH 2.5

Type: Nanobody

Class: Recombinant

Host: Camelid

Shipment: Shipped at ambient temperature

Storage Buffer: 20 % ethanol

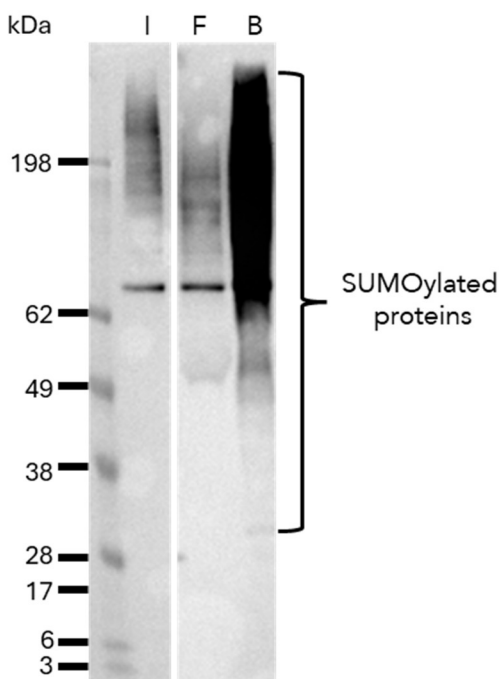
Storage Condition: Upon receipt store at +4°C. Do not freeze!

Stability: Stable for 1 year upon receipt

chromotek® SUMO1-Trap Magnetic Agarose

Product Code: s1tma

Selected Validation Data



The SUMO1-Trap Magnetic Agarose (s1tma) was used to immunoprecipitate endogenous SUMO1ylated proteins from a human cell line. Samples of the input lysate (I), non-bound flow-through (F) and bound (B) fraction were analyzed using Western blot. SUMO1ylated proteins are highly enriched using the SUMO1-Trap. Data kindly provided by Prof. Alfred Vertegaal, Leiden University, The Netherlands.

Suggested Buffer Compositions for IP

Buffer	Composition
Lysis Buffer	10 mM Tris/Cl pH 7.5, 150 mM NaCl, 0.5 mM EDTA, 0.5 % Nonidet™ P40 Substitute (adjust the pH at +4°C)
RIPA Buffer	10 mM Tris/Cl pH 7.5, 150 mM NaCl, 0.5 mM EDTA, 0.1 % SDS, 1 % Triton™ X-100, 1 % deoxycholate (adjust the pH at +4°C)
Dilution Buffer	10 mM Tris/Cl pH 7.5, 150 mM NaCl, 0.5 mM EDTA (adjust the pH at +4°C)
Wash Buffer	10 mM Tris/Cl pH 7.5, 150 mM NaCl, 0.05 % Nonidet™ P40 Substitute, 0.5 mM EDTA (adjust the pH at +4°C)
2x SDS-sample buffer	120 mM Tris/Cl pH 6.8, 20 % glycerol, 4 % SDS, 0.04 % bromophenol blue, 10 % β- mercaptoethanol
Acidic elution buffer	200 mM glycine pH 2.5 (adjust the pH at +4°C)
Neutralization buffer	1 M Tris pH 10.4 (adjust the pH at +4°C)

Note: Use your equivalent cell lysis buffer for other cell types like yeast, plants, insects, bacteria. Consider using a Wash buffer without detergent for Co-IP.

chromotek® SUMO1-Trap Magnetic Agarose

Product Code: s1tma

Product Sizes

Product	Product Code	Size
SUMO1-Trap Magnetic Agarose	s1tma-10	10 reactions
	s1tma-20	20 reactions
	s1tma-100	100 reactions
	s1tma-200	200 reactions
	s1tma-400	400 reactions

chromotek® SUMO1-Trap Magnetic Agarose

Product Code: s1tma

Protocol at a glance

General

- Perform all steps at 4°C
- Use your preferred cell lysis buffer and cell lysis conditions

Cell Lysis



- Use 10^6 - 10^7 cells and 200 μ L Lysis buffer.
- Perform cell lysis and clear lysate
- Mix 200 μ L cleared lysate with 300 μ L dilution buffer.

Bead Equilibration



- Transfer 25 μ L bead slurry into a 1.5 mL tube
- Equilibrate beads 3x with 500 μ L dilution buffer

Protein binding



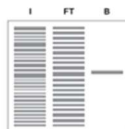
- Add 500 μ L diluted lysate to beads
- Rotate end-over-end for 1 hour at 4°C.

Washing



- Wash beads 3x with 500 μ L wash buffer
- Transfer beads to a new tube during the last washing step

Elution with SDS-sample buffer



- Resuspend beads in 80 μ L 2x SDS-sample buffer
- Boil beads for 5 min at 95°C
- Analyze the supernatant in SDS-PAGE/ Western Blot

chromotek® SUMO1-Trap Magnetic Agarose

Product Code: s1tma

Immunoprecipitation Protocol

Cell Material

The following protocol describes the preparation of a mammalian cell lysate.

For other type of cells, we recommend using 500 µg of cell extract and start the protocol with step Bead equilibration.

Note: Precipitation of SUMOylated proteins may be facilitated by treating cells with proteasome inhibitors or other stressors prior to harvesting. Commonly used stressors are MG-132 (also known as MG132), arsenic trioxide or interferon α , for example. Exact conditions must be optimized for each cell type etc.

Mammalian Cell Lysis

Note: Harvesting of cells and cell lysis should be performed with ice-cold buffers. We strongly recommend adding protease inhibitors to the Lysis buffer to prevent degradation of your target protein and its binding partners.

Note: If necessary, SUMO proteases may be inhibited by the addition of inhibitors such as PR-619, and either iodoacetamide (IAA) or N-ethylmaleimide (NEM). Concentrations may need to be optimized for each cell type, growth conditions etc.

For one immunoprecipitation reaction, we recommend using $\sim 10^6$ - 10^7 cells.

1. Choice of lysis buffer:
 - a. For cytoplasmic proteins, resuspend the cell pellet in 200 µL ice-cold Lysis buffer by pipetting up and down. Supplement Lysis buffer with protease inhibitor cocktail and 1 mM PMSF (not included).
 - b. For nuclear/chromatin proteins, resuspend cell pellet in 200 µL ice-cold RIPA buffer supplemented with DNase I (f.c. 75-150 Kunitz U/mL), MgCl_2 (f.c. 2.5 mM), protease inhibitor cocktail and PMSF (f.c. 1 mM) (not included).
2. Place the tube on ice for 30 min and extensively pipette the suspension every 10 min.
3. Centrifuge cell lysate at 17,000x g for 10 min at +4°C. Transfer cleared lysate (supernatant) to a pre-cooled tube and add 300 µL Dilution buffer supplemented with 1 mM PMSF and protease inhibitor cocktail (not included). If required, save 50 µL of diluted lysate for further analysis (input fraction).

Bead Equilibration

1. Resuspend the beads by gently pipetting them up and down or by inverting the tube. Do not vortex the beads!
2. Transfer 25 µL of bead slurry into a 1.5 mL reaction tube.
3. Add 500 µL ice-cold Dilution buffer.
4. Separate the beads with a magnet until the supernatant is clear. Discard the supernatant.

chromotek® SUMO1-Trap Magnetic Agarose

Product Code: s1tma

Protein Binding

1. Add diluted lysate to the equilibrated beads.
2. Rotate end-over-end for 1 hour at +4°C.

Washing

1. Separate the beads with a magnet until the supernatant is clear.
2. If required, save 50 µL of supernatant for further analysis (flow-through/non-bound fraction).
3. Discard remaining supernatant.
4. Resuspend beads in 500 µL Wash buffer.
5. Separate the beads with a magnet until the supernatant is clear. Discard the remaining supernatant.
6. Repeat this step at least twice.
7. During the last washing step, transfer the beads to a new tube.

Optional: To increase stringency of the Wash buffer, test various salt concentrations e.g. 150-500 mM, and/or add a non-ionic detergent e.g. Triton™ X-100 (see Wash buffer compatibility information for maximal concentrations).

Elution with 2x SDS-sample buffer (Laemmli)

1. Remove the remaining supernatant.
2. Resuspend beads in 80 µL 2x SDS-sample buffer.
3. Boil beads for 5 min at +95°C to dissociate immunocomplexes from beads.
4. Separate the beads with a magnet.
5. Analyze the supernatant in SDS-PAGE / Western Blot.

Elution with Acidic Elution Buffer

1. Remove the remaining supernatant.
2. Add 50-100 µL Acidic elution buffer and constantly pipette up and down for 30-60 sec at +4°C or room temperature.
3. Separate the beads with a magnet until the supernatant is clear.
4. Transfer the supernatant to a new tube.
5. Immediately neutralize the eluate fraction with 5-10 µL Neutralization buffer.
6. Repeat this step at least once to increase elution efficiency.

Note: Elution at room temperature is more efficient than elution at +4°C. Prewarm buffers for elution at room temperature.

chromotek® SUMO1-Trap Magnetic Agarose

Product Code: s1tma

Related Products

Product	Code
SUMO1-Trap Agarose	s1ta
SUMO1-Trap Agarose, Kit for Immunoprecipitation	s1tak
SUMO1-Trap Magnetic Agarose, Kit for Immunoprecipitation	s1tmak

Contact

Proteintech North America (HQ)

Proteintech Group, Inc.
5500 Pearl Street, Suite 400
Rosemont, IL 60018 USA

1-888-472-4522
proteintech@ptglab.com

Proteintech Europe

Transmission (6th Fl)
6 Atherton Street
M3 3GS, Manchester, UK

+44 161 839 3007
europe@ptglab.com

Proteintech Germany

Fraunhoferstr. 1
82152, Planegg-Martinsried
Germany

+49 89 124 148 850
germany@ptglab.com

Disclaimer

For research use only (RUO), not for diagnostic or therapeutic use.

ChromoTek® is a registered trademark of ChromoTek GmbH, part of Proteintech Group.
NANOBODY® compound is a registered trademark of Ablynx N.V.