

For Research Use Only

# Human CD8 Magnetic Beads Kit

Catalog Number: KMS003



[www.ptglab.com](http://www.ptglab.com)

## Description

CD8 is a cell surface glycoprotein found on most cytotoxic T lymphocytes and is used as a marker for these cells. It acts as a coreceptor for T cell receptor and functions to recognize MHC-I antigens. 10%-30% human lymphocytes are CD8 positive. Human CD8 Magnetic Beads Kit is used for isolation or depletion of human CD8 T lymphocytes from PBMC, whole blood, or other sample types. Following incubation with biotinylated human CD8 antibody and streptavidin conjugated magnetic beads, the cell sample is placed on a magnet. CD8+ cells remain attached to magnetic beads after separation and can be used for downstream applications, such as cell expansion, but are not suitable for flow cytometry analysis. CD8- cells remain in the supernatant and can be used for further applications.

## Components

	KMS003-10:
	· MS001-10: 100µL 10mg/mL streptavidin magnetic beads
	· MS65204-10: 100 µL 0.1mg/mL Biotin-CD8 (clone: UCHT4)
	KMS003-100:
	· MS001-100: 1mL 10mg/mL streptavidin magnetic beads
	· MS65204-100: 1mL 0.1mg/mL Biotin-CD8 (clone: UCHT4)

## Package

10test/100test

## Storage

2-8°C

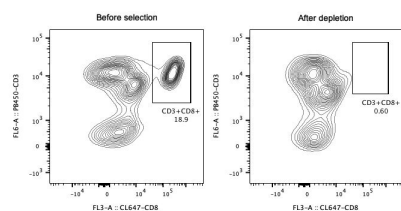
## Reactivity

Human

## Recommend usage

10 µL Biotin-CD8 antibody and 10 µL streptavidin beads for  $1 \times 10^7$  cells

## Validation Data



**Representative example of enrichment and depletion:** Following depletion of CD8<sup>+</sup> cells, supernatant cell suspension was stained with PB450-CD3(clone: HIT3a) and CL647-CD8(clone: OKT8). CD45<sup>+</sup> cells are gated in the analysis. Left panel: CD3<sup>+</sup>CD8<sup>+</sup> cells before selection. Right panel: CD3<sup>+</sup>CD8<sup>+</sup> cells after depletion. Human CD... magnetic beads kit is validated using PBMC from three different donors.

For technical support and original validation data for this product please contact

T: 1 (888) 4PTGLAB(1-888-478-4522)(toll free in USA), or  
1(312) 455-8498(outside USA)

E: [proteintech@ptglab.com](mailto:proteintech@ptglab.com)  
W: [ptglab.com](http://ptglab.com)

This product is exclusively available under  
Proteintech Group brand and is not available  
to purchase from any other manufacturer.