

For Research Use Only

Human CD16 Magnetic Beads Kit

Catalog Number: KMS006



www.ptglab.com

Description

CD16, which is also known as Fc RIII, is a receptor for the Fc portion of IgG and is involved in antibody dependent cellular cytotoxicity. 5%-10% human peripheral blood mononuclear cells (PBMC) express CD16. Human CD16 Magnetic Beads Kit is used for isolation or depletion of human CD16 NK cells/monocytes from PBMC, whole blood, or other sample types. Following incubation with biotinylated human CD16 antibody and Streptavidin magnetic beads, the cell sample is placed on a magnet. CD16+ cells remain attached to magnetic beads after separation and can be used for downstream applications, such as in cell expansion. CD16- cells remain in supernatant and can also be used for further applications.

Components

KMS006-10:
· MS001-10: 100µL 10mg/mL streptavidin magnetic beads
· MS65090-10: 100µL 0.1mg/mL Biotin-CD16 (clone: 3G8)
KMS006-100:
· MS001-100: 1mL 10mg/mL streptavidin magnetic beads
· MS65090-100: 1mL 0.1mg/mL Biotin-CD16 (clone: 3G8)

Package

10test/100test

Storage

2-8°C

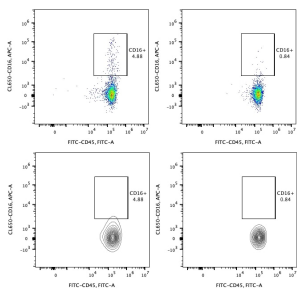
Reactivity

Human

Recommend usage

10µL Biotin-CD16 antibody and 10µL streptavidin beads for 1×10^7 cells.

Validation Data



Representative example of depletion: Following cell separation, cell suspension was stained with FITC-CD45(F10-89-4) and CL650-CD16(3G8) antibodies. All viable cells are gated in the analysis. Left panel: CD16+CD45+ cells before selection. Right panel: CD16+CD45+ cells after depletion. Human CD16 magnetic beads kit is... tested using PBMC from three donors.

For technical support and original validation data for this product please contact

T: 1 (888) 4PTGLAB(1-888-478-4522)(toll free in USA), or
1(312) 455-8498(outside USA)

E: proteintech@ptglab.com
W: ptglab.com

This product is exclusively available under
Proteintech Group brand and is not available
to purchase from any other manufacturer.