

For Research Use Only

Mouse Lineage Depletion Kit

Catalog Number: KMS301



www.ptglab.com

Description

Mouse Lineage Depletion Kit is designed to deplete major hematopoietic lineage-committed cells from mouse bone marrow cells. After lineage cell depletion, c-kit⁺ mouse hematopoietic progenitor cells will be enriched. This kit contains two components: biotin labeled mouse lineage antibody cocktail and streptavidin magnetic beads. Through incubation of samples with biotin antibody cocktail followed by incubation of streptavidin beads, the magnetically labeled lineage-committed cells will be retained in the tube by magnetic separator. The untouched mouse hematopoietic progenitor cells are collected in supernatant. Any downstream application can be performed on hematopoietic progenitor cells after separation, such as Flow Cytometry, transfection and in vitro culture.

Components

KMS301-10:

- MS301A-10: 300 μ L biotin labeled mouse lineage antibody cocktail (Ter119, Gr-1, CD11b, CD45R, CD3)
- MS301B-10: 300 μ L streptavidin magnetic beads

KMS301-100:

- MS301A-100: 3mL biotin labeled mouse lineage antibody cocktail (Ter119, Gr-1, CD11b, CD45R, CD3)
- MS301B-100: 3mL streptavidin magnetic beads

Package

10test/100test

Storage

2-8°C

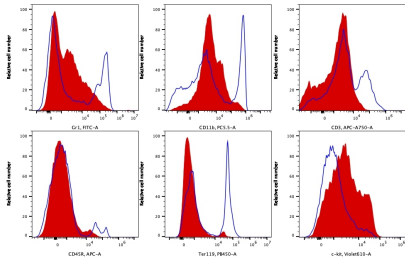
Reactivity

Mouse

Recommend usage

30 μ L biotin labeled antibody cocktail and 30 μ L streptavidin beads for 1×10^7 total mouse bone marrow cells.

Validation Data



Representative example of depletion: Following cell separation, cell suspension was stained with FITC-Gr1, PC5.5-CD11b, APC-AF750-CD3, CL650-CD45R, PB450-Ter119 and BV605-c-kit antibodies. All viable cells are gated in the analysis. Blue: before depletion. Red: after depletion.

For technical support and original validation data for this product please contact

T: 1 (888) 4PTGLAB(1-888-478-4522)(toll free in USA), or
1(312) 455-8498(outside USA)

E: proteintech@ptglab.com
W: ptglab.com

This product is exclusively available under
Proteintech Group brand and is not available
to purchase from any other manufacturer.