

For Research Use Only

Human CD16 Magnetic Beads

Catalog Number: MS007



www.ptglab.com

Description

CD16, which is also known as Fc γ RIII, is a receptor for the Fc portion of IgG and is involved in antibody dependent cellular cytotoxicity. 5%-10% human peripheral blood mononuclear cells (PBMC) express CD16. Human CD16 Magnetic Beads Kit is used for isolation or depletion of human CD16 NK cells/monocytes from PBMC, whole blood, or other sample types. CD16 positive cells and negative cells can be separated by a magnet after short incubation with Human CD16 Magnetic Beads. CD16 positive cells remain attached to magnetic beads after separation and can be used for further molecular analysis or in vitro culture, but not suitable for flow cytometry analysis. CD16 negative cells remain in supernatant and can also be used for any further application.

Components

MS007-10: 100 μ L 10 mg/mL human CD16 magnetic beads

MS007-100: 1 mL 10 mg/mL human CD16 magnetic beads

Package

10 test/100 test

Storage

2-8°C

Reactivity

Human

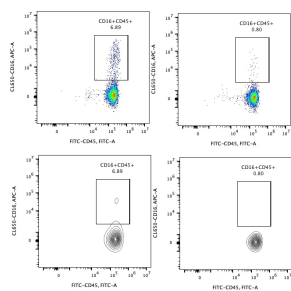
Recommend usage

10 μ L Human CD16 Magnetic Beads for 1×10^7 cells

Beads Diameter

2.7 μ m

Validation Data



Representative example of depletion: Following cell separation, cell suspension was stained with FITC-CD45(F10-89-4) and CL650-CD16(3G8) antibodies. All viable cells are gated in the analysis. Left panel: CD16+CD45+ cells before selection. Right panel: CD16+CD45+ cells after depletion. Human CD16 magnetic beads are tested.. using PBMC from three donors.

For technical support and original validation data for this product please contact

T: 1 (888) 4PTGLAB(1-888-478-4522)(toll free in USA), or
1(312) 455-8498(outside USA)

E: proteintech@ptglab.com
W: ptglab.com

This product is exclusively available under
Proteintech Group brand and is not available
to purchase from any other manufacturer.