

For Research Use Only

# IHC Detect Kit for Rabbit/Mouse Primary Antibody

Catalog Number: PK10006



## Description

The PK10006 kit is designed to facilitate signal detection during IHC analysis of FFPE tissue samples using primary antibodies raised in rabbits/mice. The kit consists of Polymer HRP-Goat anti- Rabbit/Mouse Secondary Antibody and an ultra-sensitive Chromogen for highly sensitive detection of rabbit/mouse primary antibodies. The kit also contains an optimized primary antibody dilution buffer that preserves primary antibody activity and helps lower non-specific background staining.

### Note:

\* If you are planning to use a rabbit primary antibody for staining mouse samples, we recommend using our IHC Detect Kit for Rabbit Primary Antibody (Cat.NO. [PK10009](#)).

\* If antigen retrieval buffer, counter staining reagent and mounting media are needed, please see our IHC Prep & Detect Kit for Rabbit/Mouse Primary Antibody (Cat.NO. [PK10019](#)).

## Components

Part NO.	Component	Size
HC000	Quenching Buffer (RTU)	6 mL
HC004	Primary Antibody Diluent (RTU)	24 mL
HC005	Polymer HRP-Goat anti-Rabbit/Mouse Secondary Antibody	6 mL
HC006	Chromogen Component A	0.4 mL
HC007	Chromogen Component B	8 mL

**Size:** 60 tests (may vary depending on tissue size).

## Package

60T

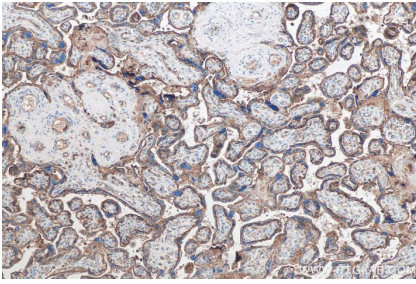
## Storage

All the reagents are stored at 2-8°C. The kit is stable for 6 months from the date of receipt.

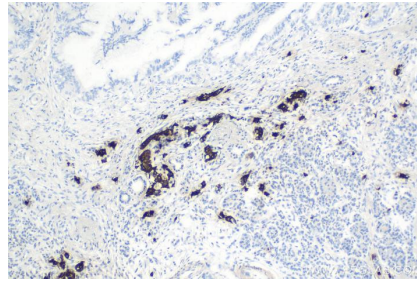
## Application Note

This kit is recommended for FFPE tissues and not for frozen sections.

## Validation Data



IHC analysis of human placenta tissue using Proteintech's SLC2A3 rabbit polyclonal antibody (20403-1-AP) and IHC Detect Kit for Rabbit/Mouse Primary Antibody (PK10006).



IHC analysis of human pancreas cancer tissue using Proteintech's Insulin mouse monoclonal antibody (66198-1-Ig) and IHC Detect Kit for Rabbit/Mouse Primary Antibody (PK10006).

**For technical support and original validation data for this product please contact**

T: 1 (888) 4PTGLAB(1-888-478-4522)(toll free in USA), or  
1(312) 455-8498(outside USA)

E: [proteintech@ptglab.com](mailto:proteintech@ptglab.com)  
W: [ptglab.com](http://ptglab.com)

**This product is exclusively available under Proteintech Group brand and is not available to purchase from any other manufacturer.**