

For Research Use Only

# IHC Prep & Detect Kit for Rabbit/Mouse Primary Antibody

Catalog Number: PK10019



www.ptglab.com

## Description

The PK10019 kit is designed for developing a complete IHC workflow on FFPE samples using primary antibodies raised in rabbits/mice. The kit contains all the basic reagents, starting from antigen retrieval buffer to mounting media, that would be required for IHC staining of tissue sections with rabbit/mouse primary antibodies. By simply optimizing the primary antibody concentration and a few operational parameters, a complete IHC workflow can be easily established using this kit.

\* If you are planning to use a rabbit primary antibody for staining mouse samples, we recommend using our IHC Prep & Detect Kit for Rabbit Primary Antibody (Cat.NO. [PK10017](#)).

## Components

Part NO.	Component	Size
HC001	Antigen Retrieval Buffer (50× Tris-EDTA)	100 mL
HC002	Washing Buffer (30×)	120 mL
HC003	Blocking Buffer	5 mL
HC000	Quenching Buffer (RTU)	5 mL
HC004	Primary Antibody Diluent (RTU)	100 mL
HC005	Polymer HRP-Goat anti-Rabbit/Mouse Secondary Antibody	5 mL
HC006	Chromogen Component A	0.2 mL
HC007	Chromogen Component B	4 mL
HC008	Signal Enhancer	5 mL
HC009	Counter Staining Reagent	5 mL
HC0010	Mounting Media	5 mL

**Size:** 50-80 tests (may vary depending on tissue size).

## Package

50T

## Storage

All the reagents are stored at 2-8°C. The kit is stable for 6 months from the date of receipt.

## Application Note

This kit is recommended for FFPE tissues and not for frozen sections.

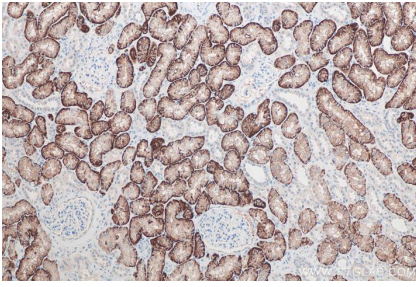
This kit contains an antigen retrieval buffer based on Tris-EDTA by default, which in our experience is suitable for over 90% of targets. However, if a negative result is obtained using this buffer, we recommend trying alternative buffers listed below.

# [PR30001](#) Sodium Citrate Antigen Retrieval Buffer 50x

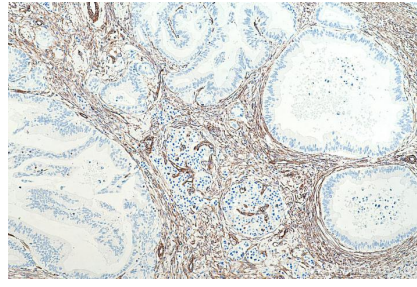
# [PR30014](#) Protease K Retrieval Buffer (A+B) (Heating is not required with this buffer)

Refer to user's manual for instructions on developing an IHC workflow using this kit.

## Validation Data



IHC analysis of human kidney tissue using Proteintech's SLC13A3 rabbit polyclonal antibody (26184-1-AP) and IHC Prep & Detect Kit for Rabbit/Mouse Primary Antibody (PK10019).



IHC analysis of human pancreas tissue using Proteintech's Vimentin mouse monoclonal antibody (60330-1-Ig) and IHC Prep & Detect Kit for Rabbit/Mouse Primary Antibody (PK10019).

**For technical support and original validation data for this product please contact**

T: 1 (888) 4PTGLAB(1-888-478-4522)(toll free in USA), or  
1(312) 455-8498(outside USA)

E: [proteintech@ptglab.com](mailto:proteintech@ptglab.com)  
W: [ptglab.com](http://ptglab.com)

**This product is exclusively available under Proteintech Group brand and is not available to purchase from any other manufacturer.**