

# OXPHOS Cocktail (Human recommended)

Catalog Number: PK30006

## Description

OXPHOS (oxidative phosphorylation) requires the transport of electrons to molecular oxygen by the mitochondrial respiratory chain which involves four multi-subunit complexes known as complexes I, II, III, and IV (CI, CII, CIII and CIV) and two mobile electron carriers, coenzyme Q (CoQ) and cytochrome c. The respiratory chain generates a transmembrane proton gradient that is channeled by complex V (also known as ATP synthase, CV) to synthesize ATP.

This OXPHOS kit contains five Polyclonal antibodies. The kit is suitable for Western Blotting analysis of the relative levels of the 5 OXPHOS complexes in mitochondrial preparations from human. Individual proteins that need to be tested can be purchased according to the corresponding catalog number.

## Product Information

	Cat.No	Name	Complex	MW	Size
Antibodies	<a href="#">14676-1-AP</a>	ATP5A1	Complexes V	50-55 kDa	100ul
	<a href="#">21705-1-AP</a>	UQCRC1	Complexes III	45 kDa	
	<a href="#">10620-1-AP</a>	SDHB	Complexes II	32 kDa	
	<a href="#">55070-1-AP</a>	MTCO2	Complexes IV	23-25 kDa	
	<a href="#">14794-1-AP</a>	NDUFB8	Complexes I	19-22 kDa	

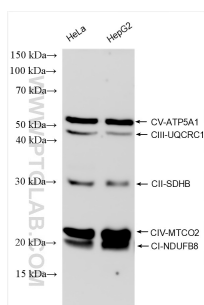
## Package

100ul

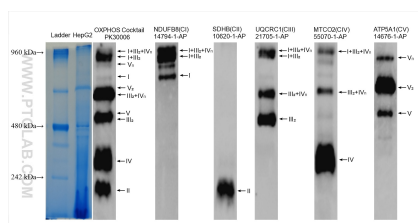
## Storage

Store at -20°C. Stable for one year after shipment.

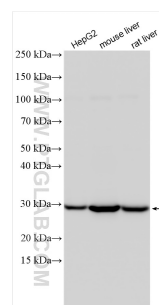
## Validation Data



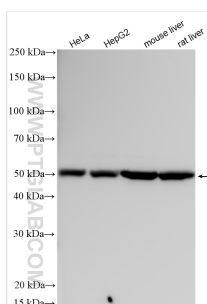
Various lysates were subjected to SDS PAGE followed by western blot with PK30006 (OXPHOS Cocktail (Human recommended)) at dilution of 1:4000 incubated at room temperature for 1 hours. <Br>We recommend using 12% separating gel or 8%-18% gradient gel.



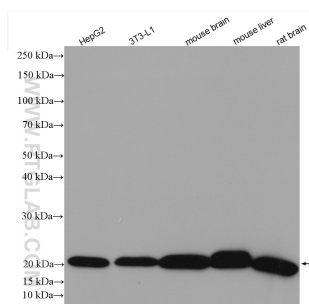
Blue Native PAGE showing oxidative phosphorylation (OXPHOS) complexes and super complexes in mitochondria. HepG2 cell lysates were subjected to BN PAGE followed by western blot with PK30006 (OXPHOS Cocktail (Human recommended)) at dilution of 1:5000 and antibodies to each complex incubated at room... temperature for 1.5 hours.



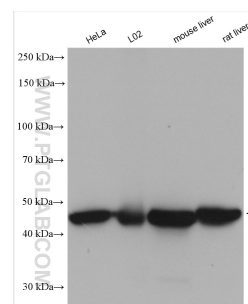
Various lysates were subjected to SDS PAGE followed by western blot with 10620-1-AP (SDHB antibody) at dilution of 1:16000 incubated at room temperature for 1.5 hours.



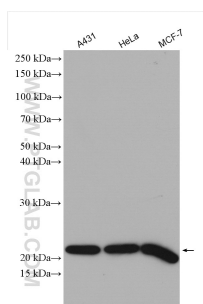
Various lysates were subjected to SDS PAGE followed by western blot with 14676-1-AP (ATP5A1 antibody) at dilution of 1:20000 incubated at room temperature for 1.5 hours.



Various lysates were subjected to SDS PAGE followed by western blot with 14794-1-AP (NDUFB8 antibody) at dilution of 1:10000 incubated at room temperature for 1.5 hours.



Various lysates were subjected to SDS PAGE followed by western blot with 21705-1-AP (UQCRC1 antibody) at dilution of 1:4000 incubated at room temperature for 1.5 hours.



Various lysates were subjected to SDS PAGE followed by western blot with 55070-1-AP (MTCO2 antibody) at dilution of 1:6000 incubated at room temperature for 1.5 hours.

**For technical support and original validation data for this product please contact**

T: 1 (888) 4PTGLAB(1-888-478-4522)(toll free in USA), or  
1(312) 455-8498(outside USA)

E: [proteintech@ptglab.com](mailto:proteintech@ptglab.com)  
W: [ptglab.com](http://ptglab.com)

**This product is exclusively available under Proteintech Group brand and is not available to purchase from any other manufacturer.**