

For Research Use Only

# Human Naïve/Memory T Cell Panel

Catalog Number: PK30011



www.ptglab.com

## Description

Naïve T cells have not previously encountered antigen while memory T cells have and can therefore more quickly respond to subsequent encounters of that antigen.

This panel is designed for the separation of T lymphocytes (CD3 positive) into Helper T Lymphocyte (CD4 positive), Cytotoxic T Lymphocyte (CD8 positive), Naïve T Lymphocytes (CD45RA expressing) and Memory T Lymphocytes (CD45RO expressing). The PE channel is left open.

## Panel Components

Fluorochrome (ex/em)	Catalog No	Target	Clone	Isotype	Description
CoraLite Plus 405 (399 nm/422 nm)	<a href="#">CL405-65151</a>	CD3	UCHT1	Mouse IgG1k	T cell marker
CoraLite Plus 647 (654 nm/674 nm)	<a href="#">CL647-65134</a>	CD4	OKT4	Mouse IgG2bk	T helper cell marker
CoraLite Plus 750 (755 nm/780 nm)	<a href="#">CL750-65135</a>	CD8a	OKT8	Mouse IgG2ak	Cytotoxic T cell marker
Cardinal Red (592 nm/611 nm)	<a href="#">CR-65226</a>	CD45RA	F8-11-13	Mouse IgG1k	Naïve T cell Marker
FITC Plus (495 nm/524 nm)	<a href="#">FITC-65150</a>	CD45RO	UCHL1	Mouse IgG2ak	Memory T cell Marker

## Package

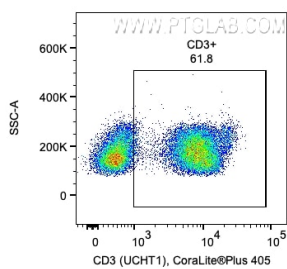
5x100 tests

## Storage

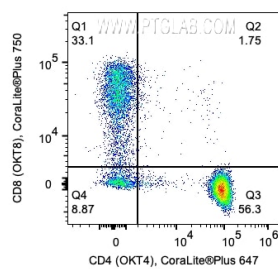
Storage Buffer: PBS with 0.09% sodium azide and 0.5% BSA.

Storage Conditions: Store at 2-8°C. Avoid exposure to light. Stable for one year after shipment.

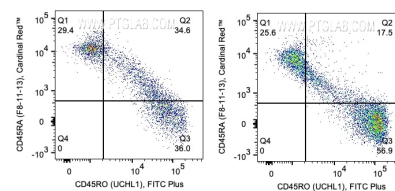
## Validation Data



1x10<sup>6</sup> Human PBMCs were stained with PK30011 Human Memory/Naïve T Cell Panel. CD3+ cells are gated. Parent population: Lymphocytes. Cells were not fixed.



1x10<sup>6</sup> Human PBMCs were stained with PK30011 Human Memory/Naïve T Cell Panel. CD4 and CD8 expression on CD3+ lymphocytes are shown. Cells were not fixed.



1x10<sup>6</sup> Human PBMCs were stained with PK30011 Human Memory/Naïve T Cell Panel. CD45RA and CD45RO expression on CD3+CD8+ (left) and CD3+/CD4+ (right) lymphocytes are shown. Cells were not fixed.

For technical support and original validation data for this product please contact

T: 1 (888) 4PTGLAB(1-888-478-4522)(toll free in USA), or  
1(312) 455-8498(outside USA)

E: [proteintech@ptglab.com](mailto:proteintech@ptglab.com)  
W: [ptglab.com](http://ptglab.com)

This product is exclusively available under Proteintech Group brand and is not available to purchase from any other manufacturer.