

For Research Use Only

ChemBright CoraLite® Plus 488

Antibody Conjugation Kit

Catalog Number: PK30030



www.ptglab.com

Product Information

Fluorescently-labeled antibodies can be used for a variety of immunoassays such as immunohistochemistry, immunocytochemistry, flow cytometry, and fluorescent Western blot.

This antibody conjugation kit is designed to covalently conjugate CoraLite® Plus 488 to antibodies in 1-2 hours. Conjugated antibodies can be used immediately or stored at 4°C for up to 12 months. This kit is suitable for three reactions of labeling 100 µg primary antibody.

Antibody requirements: This kit is compatible with IgGs at 1 mg/mL in carrier-free buffer (PBS) with <0.1% BSA. Antibody buffer must be azide and glycerol-free.

Components

Component	Catalog No.	Size
Vial A: Antibody Modifier Reagent	PK3003X-A	3*100 µg
Vial B: Lyophilized CoraLite® Plus 488	PK30030-B	3*100 µg
Storage Vial C	PK3003X-C	3*100 µg
Quenching Reagent	PK3003X-Q	200 µL

Package

3 x 100 µg

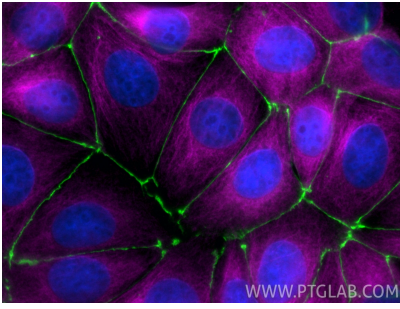
Storage

Store at room temperature (20-25°C) in the dark.

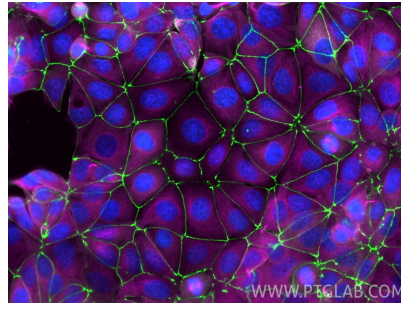
Additional Information

1. Titrations of the conjugated antibody are recommended to find the optimal antibody dilution for your application.
2. Store conjugated antibody in Vial C sealed at 4°C. Blank labels are provided to label Vial C.
3. It is recommended to add a preservative such as sodium azide to the conjugated antibody for long-term storage.
4. The estimated final concentration of the conjugated antibody is 0.83 mg/mL.

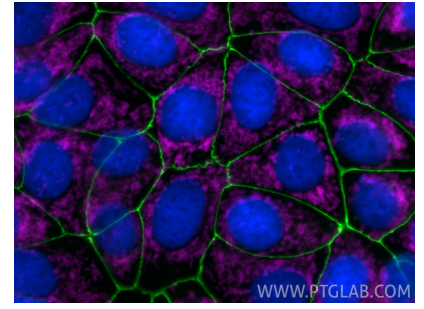
Validation Data



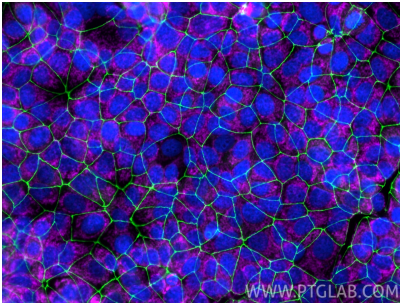
Immunofluorescence of MCF-7 cells: PFA-fixed cells were stained with anti-ZO-1 (21773-1-AP) labeled with ChemBright Kit (PK30030 green), anti-Tubulin-Alpha (66031-1-Ig) labeled with ChemBright Kit (PK30031 magenta). Cell nuclei were stained with DAPI (blue).



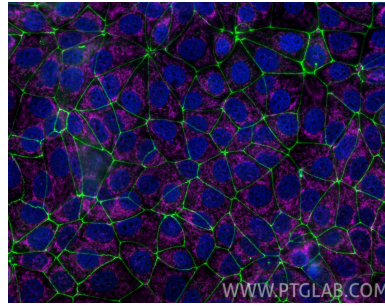
Immunofluorescence of MCF-7 cells: PFA-fixed cells were stained with anti-ZO-1 (21773-1-AP) labeled with ChemBright Kit (PK30030 green), anti-Tubulin-Alpha (66031-1-Ig) labeled with ChemBright Kit (PK30031 magenta). Cell nuclei were stained with DAPI (blue).



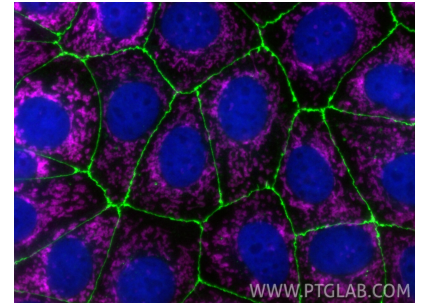
Immunofluorescence of MCF-7 cells: PFA-fixed cells were stained with anti-ZO-1 (21773-1-AP) labeled with ChemBright Kit (PK30030 green), anti-TOM20 (80501-1-RR) labeled with ChemBright Kit (PK30031 magenta). Cell nuclei were stained with DAPI (blue).



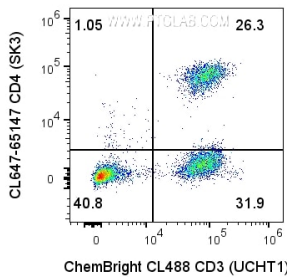
Immunofluorescence of MCF-7 cells: PFA-fixed cells were stained with anti-ZO-1 (21773-1-AP) labeled with ChemBright Kit (PK30030 green), anti-TOM20 (80501-1-RR) labeled with ChemBright Kit (PK30031 magenta). Cell nuclei were stained with DAPI (blue).



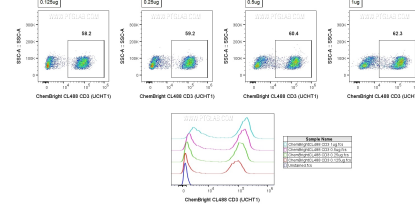
Immunofluorescence of MCF-7 cells: PFA-fixed cells were stained with anti-ZO-1 (21773-1-AP) with ChemBright CoralLite® Plus 488 Antibody Conjugation Kit (PK30030 green), anti-TOM 20 (80501-1-RR) with ChemBright CoralLite® Plus 647 Antibody Conjugation Kit (PK30031 magenta), anti-Histone H3 (68345-1-Ig) with ChemBright... CoralLite® Plus 405 Antibody Conjugation Kit (PK30035 blue).



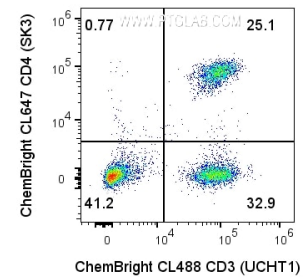
Immunofluorescence of MCF-7 cells: PFA-fixed cells were stained with anti-ZO-1 (21773-1-AP) with ChemBright CoralLite® Plus 488 Antibody Conjugation Kit (PK30030 green), anti-TOM 20 (80501-1-RR) with ChemBright CoralLite® Plus 647 Antibody Conjugation Kit (PK30031 magenta), anti-Histone H3 (68345-1-Ig) with ChemBright... CoralLite® Plus 405 Antibody Conjugation Kit (PK30035 blue).



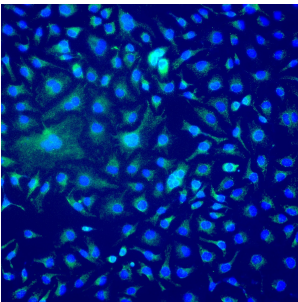
1x10⁶ Human PBMCs were surface stained with 0.25 ug Anti-Human CD3 (65151-1-Ig, clone: UCHT1) labeled with ChemBright CoralLite® Plus 488 Antibody Conjugation Kit (PK30030) and 5 uL CL647 Anti-Human CD4 (CL647-65147, clone: SK3). Cells were not fixed. Cells were treated with Fc Receptor Block prior to staining. Lymphocytes were gated.



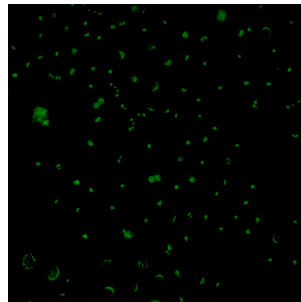
1x10⁶ Human PBMCs were surface stained with 0.125-1 ug Anti-Human CD3 (65151-1-Ig, clone: UCHT1) labeled with ChemBright CoralLite® Plus 488 Antibody Conjugation Kit (PK30030). Cells were not fixed. Cells were treated with Fc Receptor Block prior to staining. Lymphocytes were gated.



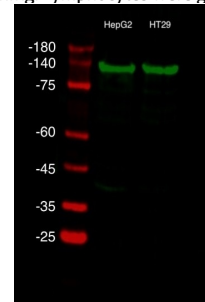
1x10⁶ Human PBMCs were surface stained with 0.125 ug Anti-Human CD3 (65151-1-Ig, clone: UCHT1) labeled with ChemBright CoralLite® Plus 488 Antibody Conjugation Kit (PK30030) and 0.125 ug Anti-Human CD4 (65147-1-Ig, clone: SK3) labeled with ChemBright CoralLite® Plus 647 Antibody Conjugation Kit (PK30031). Cells were not fixed. Cells were treated with Fc Receptor Block prior to staining. Lymphocytes were gated.



Immunofluorescent analysis of (4% PFA) fixed HeLa cells using ChemBright CoralLite® Plus 488 Antibody Conjugation Kit (PK30030) conjugated GOLGA2/GM130 Polyclonal antibody (11802-1-AP) at dilution of 1:500.



Immunofluorescent analysis of (4% PFA) fixed HeLa cells using ChemBright CoralLite® Plus 488 Antibody Conjugation Kit (PK30030) conjugated GOLGA2/GM130 Polyclonal antibody (11308-1-AP) at dilution of 1:500.



HepG2 and HT29 lysates were subjected to SDS PAGE followed by western blot using ChemBright CoralLite® Plus 488 Antibody Conjugation Kit (PK30030) conjugated TOM20 Polyclonal antibody (11802-1-AP) at dilution of 1:1000 incubated at room temperature for 1.5 hours

For technical support and original validation data for this product please contact

T: 1 (888) 4PTGLAB(1-888-478-4522)(toll free in USA), or 1(312) 455-8498(outside USA)

E: proteintech@ptglab.com
W: ptglab.com

This product is exclusively available under Proteintech Group brand and is not available to purchase from any other manufacturer.