

For Research Use Only

# Broad Range Prestained Protein Marker

Catalog Number: PL00002

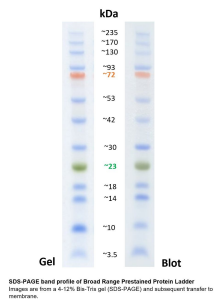


[www.ptglab.com](http://www.ptglab.com)

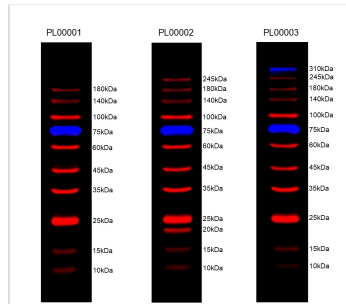
---

<b>Description</b>	The PL00002 Broad Range Protein Marker is a ready-to-use three-color protein standard with 13 prestained proteins covering a wide range of molecular weights from 3 to 245 kDa in Tris-Glycine buffer. The PL00002 Broad Range Prestained Protein Marker is designed for monitoring protein separation during SDS-polyacrylamide gel electrophoresis, verification of Western transfer efficiency on membranes (nitrocellulose, PVDF, or nylon) and for estimating the size of proteins. The PL00002 Broad Range Protein Marker is also suitable for fluorescence WB detection.
<b>Product Information</b>	Approximately 0.1-0.4 mg/ml of each protein in the buffer (20 mM Tris-phosphate (pH 7.5 at 25°C), 2 % SDS, 0.2 mM Dithiothreitol, 3.6 M Urea, and 15 % (v/v) Glycerol).
<b>Package</b>	100 µL / 500 µL
<b>Storage</b>	Store product at 4°C for up to 12 weeks. For longer storage, aliquot and store at -20°C for up to 1 year.
<b>Molecular Weight</b>	~ 3, 10, 15, 20, 25, 35, 45, 60, 75, 100, 140, 180, 245 kDa
<b>Number of Markers</b>	13
<b>Size Range</b>	3 to 245
<b>Stain Type</b>	3 colors: Blue, Red, Green
<b>Detection Method</b>	Colorimetric

## Validation Data



**SDS-PAGE band profile of Broad Range Prestained Protein Ladder:** Resolution of the Broad Range Prestained Protein Ladder in a 4-12% Bis-Tris gel (SDS-PAGE). The image shows the migration pattern in the gel and after transfer to a PVDF membrane.



**Protein ladder tested with the Bio-Rad:** 2 ul protein ladders were loaded in the gel with concentration 8%-18%. After Electrophoresis, the proteins on the gel were transferred into the PVDF membrane. This image was taken by the Bio-Rad (ChemiDoc MP Imaging System) in the 550 nm (for Blue band) and 680 nm (for Red band) range.

Gel Type	Tris-Glycine			Tris-Acetate	Bis-Tris		
	4-20%	10-20%	8%	3-9%	4-12%	10%	12%
Gel Concentration	Tris-Glycine			Tris-Acetate	Bis-Tris		
Running Buffer	Tris-Glycine			Tris-Acetate	MES		
Apparent Molecular Sizes (kDa)							
% length of Gel	10	134	120	112	110	105	100
	20	130	115	108	105	100	95
	30	125	110	103	100	95	90
	40	120	105	98	95	90	85
	50	115	100	93	90	85	80
	60	110	95	88	85	80	75
	70	105	90	83	80	75	70
	80	100	85	78	75	70	65
	90	95	80	73	70	65	60
	100	90	75	68	65	60	55

**SDS-PAGE band profile of Broad Range Prestained Protein Ladder:** Migration patterns of Broad Range Prestained Protein Ladder in different electrophoretic conditions. The apparent molecular weight of each protein (kDa) has been determined by calibration of each protein against an unstained protein ladder in specific... electrophoresis conditions. Migration patterns were determined using commercial precast mini gels.

For technical support and original validation data for this product please contact

T: 1 (888) 4PTGLAB(1-888-478-4522)(toll free in USA), or  
1(312) 455-8498(outside USA)

E: proteintech@ptglab.com  
W: ptglab.com

This product is exclusively available under Proteintech Group brand and is not available to purchase from any other manufacturer.