

## RFP-Trap for Immunoprecipitation

From cell to gel in less than one hour

- ▶ No heavy & light chains in your downstream application
- ▶ Robust performance with high yield
- ▶ Short incubation time of about 30 minutes

For mCherry, mRFP, etc.

### RFP-Trap®

ChromoTek RFP-Trap is a fully validated, well-established tool for fast and efficient one-step immunoprecipitation of RFP-fusion protein variants and their interacting factors from cell extracts or organelles. For research applications only.

### Applications

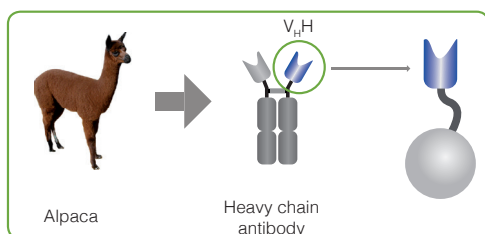
- Immunoprecipitation (IP) / Co-IP
- Mass spectrometry
- Enzyme activity measurements
- ChIP / RIP analysis

### Recognizes common RFP variants

- Including mCherry, mKate2, mPlum, mRFP, mRFPruby, tagRFP etc.
- Complete list at [www.chromotek.com](http://www.chromotek.com)

### Technology

Camelidae, e.g. alpacas, possess a type of antibodies called heavy chain antibodies. These are devoid of light chains and bind their antigen via a single variable domain ( $V_H$ ), also known as a nanobody. RFP-Trap consists of an alpaca single domain antibody that is coupled to agarose, magnetic agarose, and magnetic beads.



RFP-Trap:  
anti-RFP  $V_H$   
coupled to beads

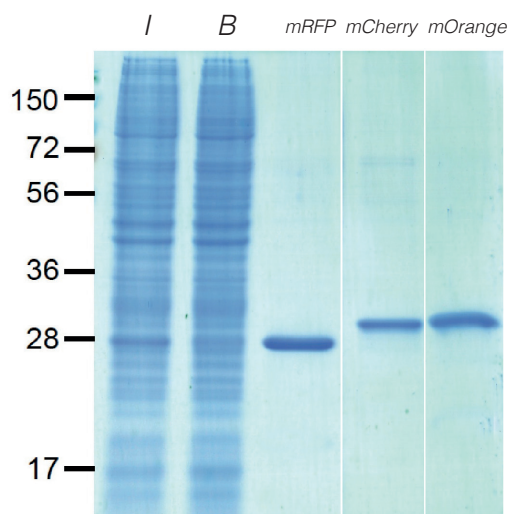
### Properties

- Highly affine with a low dissociation constant of 4nM
- Very high binding capacity of more than 8µg RFP per 10µl slurry; magnetic beads less
- Stable in harsh conditions up to 2M NaCl or 2M urea
- Versatile: coupled to agarose, magnetic agarose, and magnetic beads

### Validated affinity reagent

- Structure and function are fully characterized
- Produced at constant high quality virtually without batch-to-batch variation
- Proven: used for experiments published in more than 50 scientific articles

### Single band purification



Effective immunoprecipitations from protein extracts of human cells. Input (I), non-bound (FT) and bound fractions of mRFP, mCherry & mOrange were separated by SDS-PAGE followed by Coomassie staining.

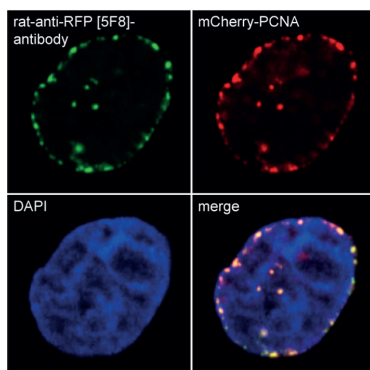
## anti-RFP IgG Antibody 5F8 for IF

The most frequently cited anti-RFP antibody

- ▶ **First in class: more than 100 publications**
- ▶ **Validated rat monoclonal antibody subtype IgG2a**

### anti-mRFP IgG antibody 5F8

ChromoTek anti-RFP antibody 5F8 is a reliable tool for sensitive detection of RFP-fusion protein variants in immunofluorescence (IF). It is ranked #1 referenced anti-RFP antibody at [www.citeAB.com](http://www.citeAB.com). For research applications only.



IF of HeLa cells stably expressing mCherry-PCNA

### Specificity

Tested on dsRed, mCherry, mPlum, mRFP, mRFPruby

### Applications

Immunofluorescence, ELISA, Immunoprecipitation

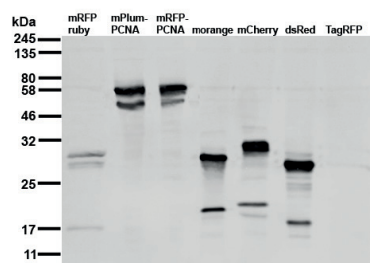
## anti-RFP IgG Antibody 6G6 for WB

Exceptional detection of red fluorescent protein variants

- ▶ **Very sensitive: down to 4ng RFP / band**
- ▶ **Validated mouse monoclonal antibody subtype IgG2c**

### anti-RFP IgG antibody 6G6

ChromoTek anti-RFP antibody 6G6 is an exceptional tool for sensitive detection of RFP-fusion protein derivatives in Western blots (WB). For research applications only.



WB cell extract of HEK cells transiently expressing different red fluorescent proteins

### Specificity

Tested on dsRed, mCherry, mOrange, mPlum, mRFP, mRFPruby

### Applications

Western blot

## Order information

| Product name & description   | Size     | Code     |
|--|----------|----------|
|  | 10 rxns  | rt-a-10  |
| RFP-Trap A   | 20 rxns  | rt-a-20  |
| ▶ anti-RFP V <sub>H</sub> H coupled to agarose beads                                 | 100 rxns | rt-a-100 |
|  | 200 rxns | rt-a-200 |
|  | 400 rxns | rt-a-400 |
| RFP-Trap A Kit   |          |          |
| ▶ RFP-Trap A   | 20 rxns  | rtak-20  |
| ▶ incl. lysis, wash and elution buffers  |          |          |
|  | 10 rxns  | rtma-10  |
| RFP-Trap MA  | 20 rxns  | rtma-20  |
| ▶ anti-RFP V <sub>H</sub> H coupled to magnetic agarose beads                        | 100 rxns | rtma-100 |
|  | 200 rxns | rtma-200 |
|  | 400 rxns | rtma-400 |
| RFP-Trap MA Kit  |          |          |
| ▶ RFP-Trap MA  | 20 rxns  | rtmak-20 |
| ▶ incl. lysis, wash and elution buffers  |          |          |
|  | 10 rxns  | rtm-10   |
| RFP-Trap M   | 20 rxns  | rtm-20   |
| ▶ anti-RFP V <sub>H</sub> H coupled to magnetic agarose beads                        | 100 rxns | rtm-100  |
|  | 200 rxns | rtm-200  |
|  | 400 rxns | rtm-400  |
| RFP-Trap M Kit   |          |          |
| ▶ RFP-Trap M   | 20 rxns  | rtmk-20  |
| ▶ incl. lysis, wash and elution buffers  |          |          |
|  | 10 units | sct-10   |
| Spin columns   | 20 units | sct-20   |
|  | 50 units | sct-50   |
| Binding control  | 20 rxns  | bab-20   |
| ▶ agarose beads  |          |          |
| Binding control  | 20 rxns  | bmab-20  |
| ▶ magnetic agarose beads   |          |          |
| Binding control  | 20 rxns  | bmp-20   |
| ▶ magnetic agarose beads   |          |          |
| <b>anti-RFP antibodies:</b>  |          |          |
| anti-RFP V <sub>H</sub> H/RFP binding protein  |          |          |
| ▶ Camelid; purified V <sub>H</sub> H protein for IP, ELISA, and IF. Used in RFP-Trap | 250µg    | rt-250   |
| anti-RFP antibody [5F8]  | 20µl     | 5F8-20   |
| ▶ Rat monoclonal IgG2a for Immunofluorescence  | 100µl    | 5F8-100  |
| anti-RFP antibody [6G6]  | 20µl     | 6G6-20   |
| ▶ Mouse monoclonal IgG2c for Western Blotting  | 100µl    | 6G6-100  |

## Order online – Save shipping costs!

USA orders:  
online [www.chromotek.com/webshop](http://www.chromotek.com/webshop)  
USAorders@chromotek.com ▶ fax 631.501.1060

All other orders:  
online [www.chromotek.com/webshop](http://www.chromotek.com/webshop)  
order@chromotek.com ▶ fax +49. 89.124.148.811

### ChromoTek GmbH, Germany

Am Klopferspitz 19

D-82152 Planegg-Martinsried

Phone: +49. 89. 124. 148. 80 Fax: +49. 89. 124. 148. 811

### ChromoTek Inc., USA

400 Oser Ave Ste 1650

Hauppauge, NY 11788

Phone: 631. 501. 1058 Fax: 631. 501. 1060

info@chromotek.com

www.chromotek.com