

# Nano-Secondary® alpaca anti-human IgG, recombinant VHH, CoraLite® Plus 647 [CTK0117]

Product code: shuGCL647-2

## Properties

<b>Description</b>	Monovalent, recombinant secondary single domain antibody to human IgG: alpaca monoclonal Nanobody, Fc-specific, CoraLite® Plus 647 conjugated
<b>Product type</b>	Nano-Secondary® Reagent, secondary Nanobody (VHH)
<b>Format</b>	Alpaca single domain antibody, monovalent
<b>Host</b>	Alpaca-derived, recombinantly produced in bacteria
<b>Target/Specificity</b>	Fc-fragment of human IgG (IgG1, IgG2, IgG3, IgG4)
<b>Cross-reactivity</b>	No cross-reactivity to human IgA/IgM/IgE, and goat, guinea pig, mouse, rabbit, rat, and sheep serum. Shows slight cross-reactivity to macaque serum.
<b>Immunogen</b>	Purified human IgG
<b>Clonality</b>	Monoclonal Nanobody
<b>Clones</b>	CTK0117 (VHH1118)
<b>Affinity (Kd)</b>	CTK0117: <i>Kd</i> <10 pM
<b>Conjugate</b>	CoraLite® Plus 647
<b>Excitation / Emission</b>	Excitation max: 654 nm, Emission max: 674 nm
<b>Degree of labeling (DOL)</b>	2 fluorophores per Nanobody
<b>Synonyms</b>	Alpaca single domain antibody, VHH, Nanobody, binding domain of single domain antibody, Nano-antibody
<b>Validation</b>	Application validated for immunofluorescence. Determination of cross-reactivity, sequence, affinity, melting point, and degree of labeling (DOL).
<b>Purity</b>	Recombinantly expressed and purified
<b>Form</b>	Buffered aqueous solution
<b>Concentration</b>	0.5 mg/mL
<b>Storage buffer</b>	10 mM HEPES pH 7.0, 500 mM NaCl, 5 mM EDTA Preservative: 0.09 % sodium azide, safety datasheet (SDS): sodium azide
<b>Storage instructions</b>	Shipped at ambient temperature. Store at +4°C short term or -20°C long term. Stable for 1 year at -20°C.
<b>Size</b>	10 µL; 100 µL
<b>RRID</b>	AB_3075304

# Nano-Secondary® alpaca anti-human IgG, recombinant VHH, CoraLite® Plus 647 [CTK0117]

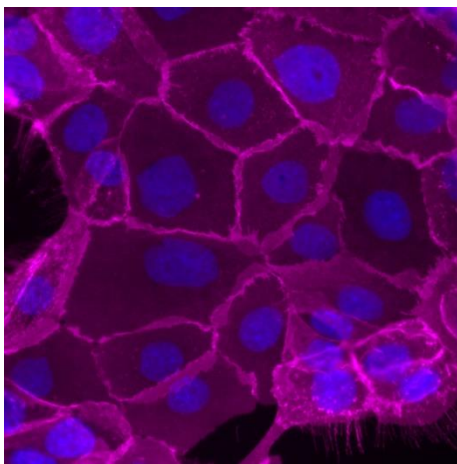
Product code: shuGCL647-2

## Applications

Immunofluorescence: recommended dilution range of 1:500-1:1000  
 Flow cytometry: recommended starting quantity 1µL per 1x10<sup>6</sup> cells.  
 The optimal dilution should be determined by the user. A titration range is recommended.

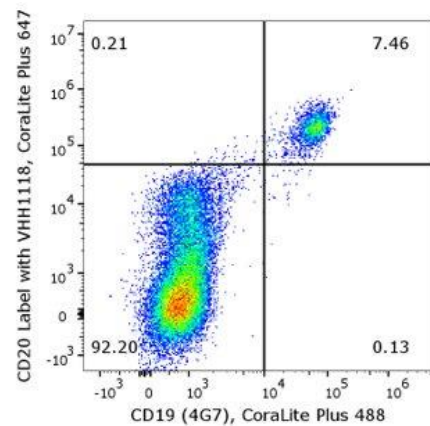
## Tested applications

### Immunofluorescence



Live A431 cells were incubated with anti-human EGFR (Cetuximab biosimilar) followed by Nano-Secondary® alpaca anti-human IgG, recombinant VHH, CoraLite® Plus 647 [CTK0117] (shuGCL647-2, magenta). Cells were fixed and nuclei were stained with DAPI (blue). Epifluorescence images were acquired with a 40x objective and post-processed

### Flow Cytometry



Flow cytometry analysis of 1x10<sup>6</sup> human peripheral blood mononuclear cells (PBMCs) stained with anti-human CD20 (Rituximab biosimilar) and Nano-Secondary® alpaca anti-human IgG, recombinant VHH, CoraLite® Plus 647 [CTK0117] (shuGCL647-2). Cells were co-stained with CoraLite Plus® 488 conjugated anti-human CD19 antibody.

*Only for research applications, not for diagnostic or therapeutic use.*

ChromoTek is a registered trademark of ChromoTek GmbH, part of Proteintech Group. CoraLite is a registered trademark of Proteintech Group. Nanobody is a registered trademark of Ablynx, a Sanofi company. Other suppliers' products may be trademarks or registered trademarks of the corresponding supplier each. Statements on other suppliers' products are given according to our best knowledge.