

Human CD3 Magnetic Beads Kit

Catalog#/Size: KMS001-10/10 test
KMS001-100/100 test

Description

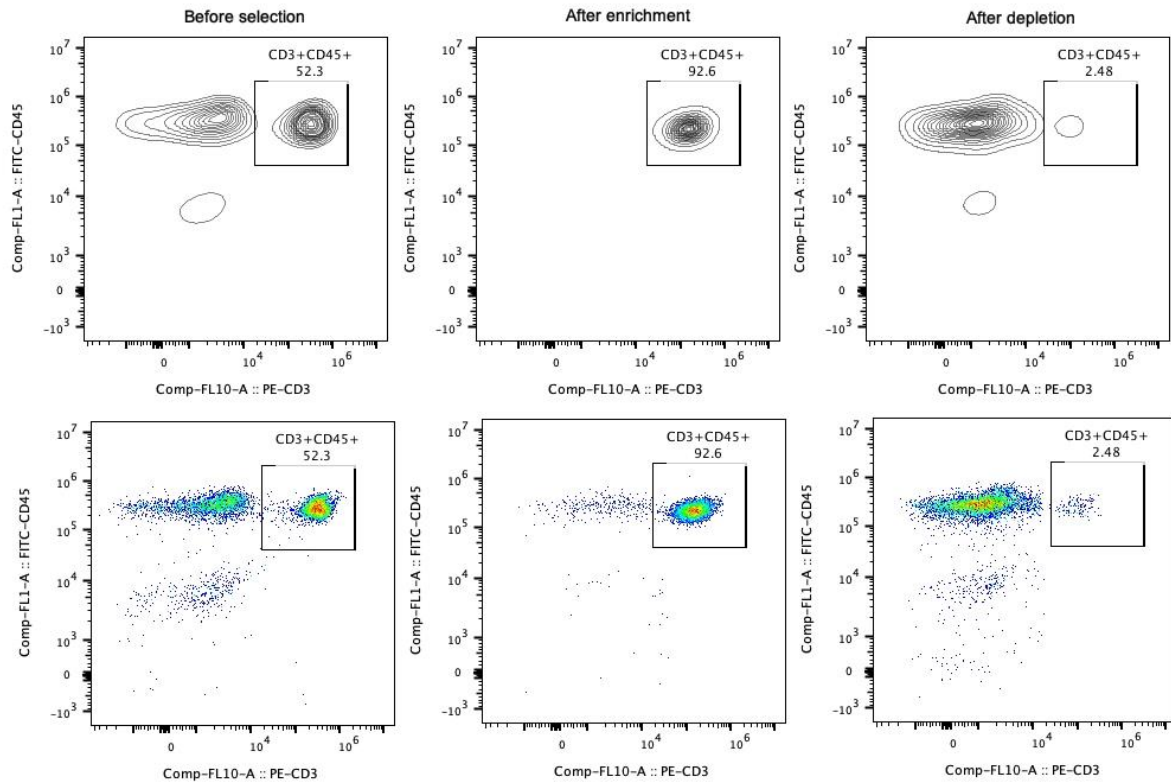
CD3 is a multimeric protein associated with T cell receptor (TCR) to form a complex involved in antigen recognition and signal transduction. 45%-70% human peripheral blood mononuclear cells (PBMC) express CD3. Human CD3 Magnetic Beads Kit is used for isolation or depletion of human CD3 T lymphocytes from PBMC, whole blood, or other sample types. Following incubation with biotinylated human CD3 antibody and Streptavidin magnetic beads, the cell sample is placed on a magnet. CD3+ cells remain attached to magnetic beads after separation and can be used for downstream applications, such as in cell expansion. CD3- cells remain in supernatant and can also be used for further applications.

Product Details

Components	<p>KMS001-10:</p> <ul style="list-style-type: none"> MS001-10: 100µL 10mg/mL streptavidin magnetic beads MS65133-10: 100µL 0.1mg/mL Biotin-CD3 (clone: OKT3) <p>KMS001-100:</p> <ul style="list-style-type: none"> MS001-100: 1mL 10mg/mL streptavidin magnetic beads MS65133-100: 1mL 0.1mg/mL Biotin-CD3 (clone: OKT3)
Reactivity	Human
Beads Diameter	2.7 µm
Storage buffer	PBS, pH7.4, 0.2% BSA and 0.05% Sodium Azide
Storage temperature	2-8°C
Recommended Usage	10µL Biotin-CD3 antibody and 10µL streptavidin beads for 1x10 ⁷ cells

Representative example of enrichment and depletion

Following cell separation, cell suspension was stained with FITC-CD45(F10-89-4) and PE-CD3(UCHT1) antibodies. All viable cells are gated in the analysis. Left panel: CD3+CD45+ cells before selection. Middle panel: CD3+CD45+ cells after enrichment. Right panel: CD3+CD45+ cells after depletion. Human CD3 magnetic beads kit is tested using PBMC from three donors.



For technical support for this product please contact:

T: 1(888)4PTGLAB(1-888-478-4522) (toll free in USA), or 1(312)455-8498 (outside USA)

E: proteintech@ptglab.com

W: ptglab.com