

## Streptavidin Magnetic Beads

Catalog#: MS001

---

### Description

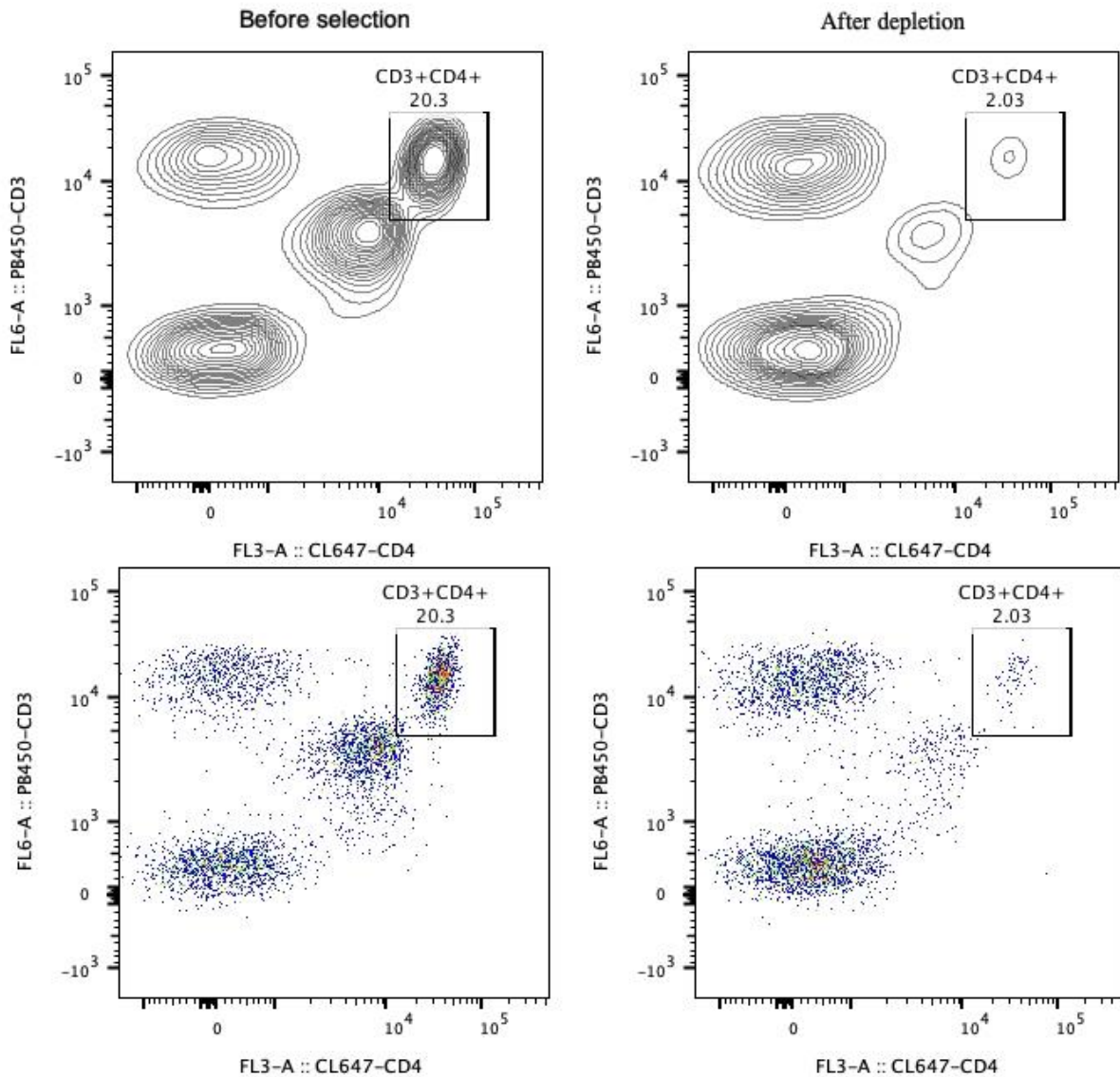
Streptavidin Magnetic Beads are uniformly distributed streptavidin coated magnetic microparticles with high binding capacity to biotinylated ligand. These beads are optimized for cell separation using biotin conjugated antibodies with a magnet. Streptavidin Magnetic Beads can be used for depletion/isolation of a specific cell sub-population following incubation of PBMC, whole blood or other sample types with a biotinylated antibody and Streptavidin Magnetic Beads.

### Product Details

Components	MS001-100: 100 $\mu$ L 10mg/mL Streptavidin Magnetic Beads MS001-1000: 1mL 10mg/mL Streptavidin Magnetic Beads
Beads Diameter x	2.7 $\mu$ m
Storage buffer	PBS, pH7.4, 0.2% BSA and 0.05% Sodium Azide
Storage temperature	2-8 $^{\circ}$ C

## Representative example of depletion

~~PBMC were incubated with biotinylated CD4 antibody and Streptavidin Magnetic Beads.~~  
Following depletion of CD4+ cells, supernatant cell suspension was stained with PB450-CD3(clone: HIT3a) and CL647-CD4(clone: OKT4). CD45+ cells are gated in the analysis. Left panel: CD3+CD4+ cells before selection. Right panel: CD3+CD4+ cells after depletion. Streptavidin Magnetic beads are tested using PBMC from three different donors.



For technical support for this product please contact:

T: 1(888)4PTGLAB(1-888-478-4522) (toll free in USA), or 1(312)455-8498 (outside USA)

E: [proteintech@ptglab.com](mailto:proteintech@ptglab.com)

W: ptglab.com