

FlexAble Antibody Labeling Kits

Any antibody. Any color. Any time.

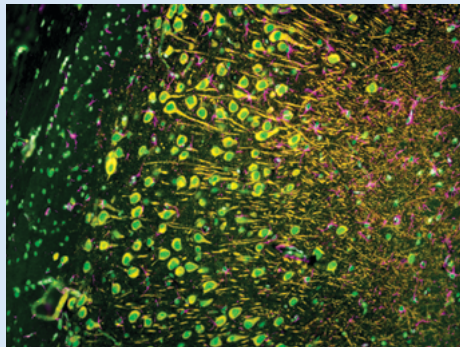
FlexAble is a novel antibody labeling kit for immunofluorescence, immunohistochemistry, western blot and flow cytometry. It uses an affinity linker to conjugate fluorochromes, enzymes and molecules in any buffer condition.

Simplify your protocol by pre-labeling your primary antibodies with FlexAble kits, removing the need for secondary antibodies and multiple rounds of staining.

Compatible with:

- Antibodies from any supplier
- Any antibody concentration
- Antibodies that contain BSA and glycerol

No buffer exchange required.



◀ **Immunofluorescence of rat brain tissue:** FFPE rat brain tissue sections were stained with anti-MAP2 (17490-1-AP) labeled with [FlexAble CoraLite® Plus 555 Kit \(KFA002, orange\)](#), anti-GFAP (16825-1-AP) labeled with [FlexAble CoraLite® Plus 647 Kit \(KFA003, magenta\)](#) and CoraLite® Plus 488-conjugated TDP-43 antibody (CL488-10782, green).

FlexAble Antibody Labeling Kits for

Species Reactivities

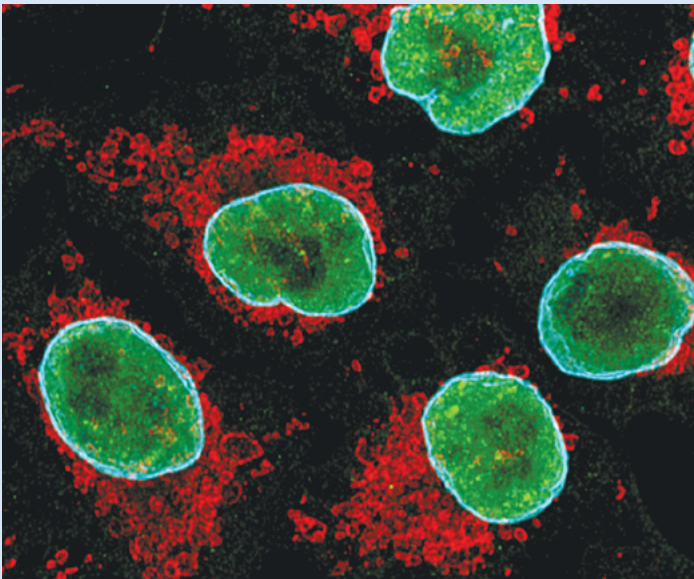
Rabbit IgG
Mouse IgG1
Mouse IgG2a
Mouse IgG2b
Human IgG

Conjugates

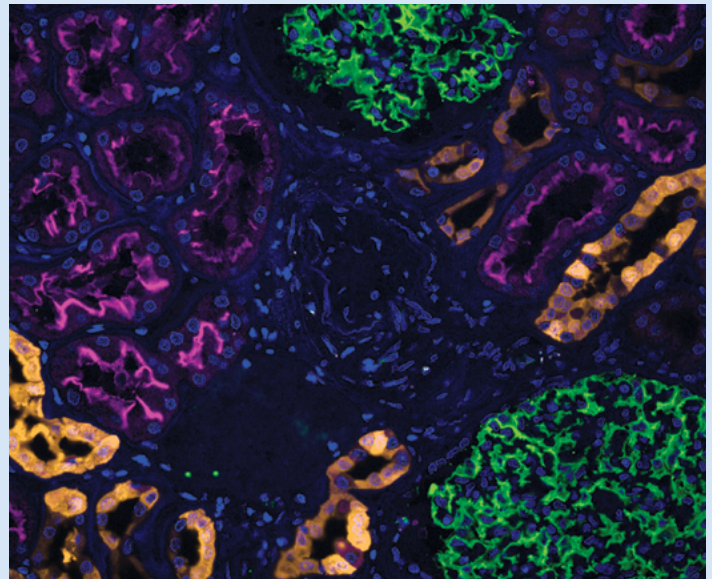
CoraLite® Plus 405
FITC Plus
CoraLite® 488
CoraLite® Plus 555
CoraLite® Plus 647
CoraLite® Plus 750
HRP
Biotin



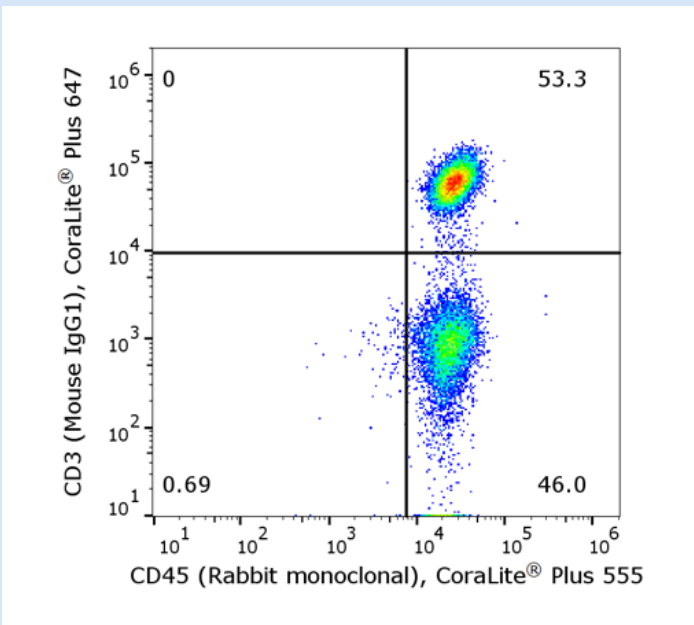
[Discover more](#)



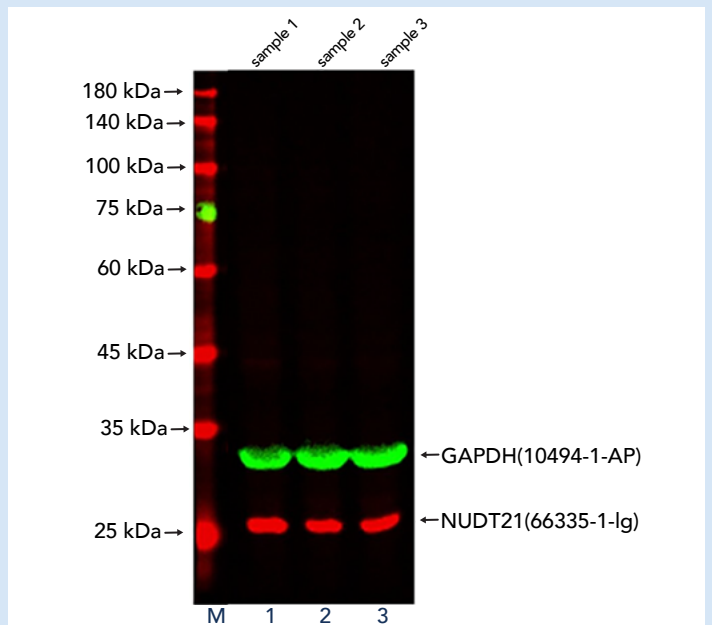
▲ **Immunofluorescence of HeLa cells:** PFA-fixed HeLa cells were stained with anti-TDP-43 (10782-2-AP) labeled with [FlexAble CoraLite® 488 Kit \(KFA001, green\)](#), anti-Tom20 (11802-1-AP) labeled with [FlexAble CoraLite® Plus 555 Kit \(KFA002, red\)](#) and anti-Lamin B1 (12987-1-AP) labeled with [FlexAble CoraLite® Plus 647 Kit \(KFA003, cyan\)](#).



▲ **Immunofluorescence of human kidney tissue:** FFPE human kidney sections were stained with anti-Calbindin (14479-1-AP) labeled with [FlexAble CoraLite® Plus 555 Kit \(KFA002, yellow\)](#), anti-ACE2 (66699-1-Ig) labeled with [FlexAble CoraLite® Plus 647 Kit \(KFA023, magenta\)](#), CoraLite® Plus 488-conjugated Podocalyxin antibody (CL488-18150, green) and DAPI (blue).



▲ **Flow cytometry of PBMC:** Flow cytometry of PBMC. 1×10^6 human peripheral blood mononuclear cells (PBMCs) were stained with anti-human CD45 labeled with [FlexAble CoraLite® Plus 555 Kit \(KFA002\)](#) and anti-CD3 (clone UCHT1, 65151-1-Ig) labeled with [FlexAble CoraLite® Plus 647 Kit \(KFA023\)](#).



▲ **WB of HeLa cell lysates:** HeLa cell lysates were detected with anti-GAPDH (10494-1-AP) labeled with [FlexAble CoraLite® Plus 555 Kit \(KFA002, green\)](#) and anti-NUDT21 (66335-1-Ig) labeled with [FlexAble CoraLite® Plus 647 Kit \(KFA023, red\)](#).