

For Research Use Only

# GLRA3 Polyclonal antibody

Catalog Number: 13145-1-AP **2 Publications**



## Basic Information

<b>Catalog Number:</b> 13145-1-AP	<b>GenBank Accession Number:</b> BC036086	<b>Purification Method:</b> Antigen affinity purification
<b>Size:</b> 150ul, Concentration: 133 µg/ml by Nanodrop and 133 µg/ml by Bradford method using BSA as the standard;	<b>GeneID (NCBI):</b> 8001	<b>Recommended Dilutions:</b> WB 1:500-1:1000
<b>Source:</b> Rabbit	<b>Full Name:</b> glycine receptor, alpha 3	
<b>Isotype:</b> IgG	<b>Calculated MW:</b> 464 aa, 54 kDa	
<b>Immunogen Catalog Number:</b> AG3702	<b>Observed MW:</b> 54 kDa	

## Applications

<b>Tested Applications:</b> WB, ELISA	<b>Positive Controls:</b> WB: MCF7 cells,
<b>Cited Applications:</b> WB	
<b>Species Specificity:</b> human, mouse, rat	
<b>Cited Species:</b> human, mouse	

## Background Information

Glycine is an inhibitory neurotransmitter in the central nervous system. The glycine receptor (GlyR) is a member of the nicotinic acetylcholine receptor of ligand-gated ion channels. This receptor has important roles in a variety of physiological processes, especially in mediating inhibitory neurotransmission in the spinal cord and brain stem. GlyR is a pentameric receptor comprised of alpha and beta subunits. Four alpha-subunits (GLRA1, GLRA2, GLRA3, GLRA4) and one beta-subunit (GLRB) of GlyR have been identified. (PMID: 11409700; 15383648)

## Notable Publications

Author	Pubmed ID	Journal	Application
Zi-Yang Zhang	30721695	Neuropharmacology	WB
Zi-Yang Zhang	31433808	PLoS Biol	WB

## Storage

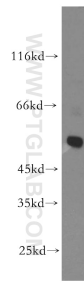
**Storage:**  
Store at -20°C. Stable for one year after shipment.  
**Storage Buffer:**  
PBS with 0.02% sodium azide and 50% glycerol pH 7.3.  
Aliquoting is unnecessary for -20°C storage

**\*\*\* 20ul sizes contain 0.1% BSA**

For technical support and original validation data for this product please contact:  
T: 1 (888) 4PTGLAB (1-888-478-4522) (toll free in USA), or 1(312) 455-8498 (outside USA)  
E: proteintech@ptglab.com  
W: ptglab.com

**This product is exclusively available under Proteintech Group brand and is not available to purchase from any other manufacturer.**

## Selected Validation Data



MCF7 cells were subjected to SDS PAGE followed by western blot with 13145-1-AP (GLRA3 antibody) at dilution of 1:200 incubated at room temperature for 1.5 hours.