

For Research Use Only

# ATP12A Polyclonal antibody

Catalog Number: 13231-1-AP



## Basic Information

<b>Catalog Number:</b> 13231-1-AP	<b>GenBank Accession Number:</b> BC031609	<b>Purification Method:</b> Antigen affinity purification
<b>Size:</b> 150ul , Concentration: 133 µg/ml by Nanodrop and 133 µg/ml by Bradford method using BSA as the standard;	<b>GeneID (NCBI):</b> 479	<b>Recommended Dilutions:</b> WB 1:500-1:1000
<b>Source:</b> Rabbit	<b>Full Name:</b> ATPase, H+/K+ transporting, nongastric, alpha polypeptide	
<b>Isotype:</b> IgG	<b>Calculated MW:</b> 1045 aa, 116 kDa	
<b>Immunogen Catalog Number:</b> AG4105	<b>Observed MW:</b> 100-110 kDa	

## Applications

<b>Tested Applications:</b> WB, ELISA	<b>Positive Controls:</b> WB : HEK-293 cells, A431 cells
<b>Species Specificity:</b> human	

## Background Information

ATP12A, also named as ATP1AL1 and Proton pump, belongs to the family of P-type cation transport ATPases. It catalyzes the hydrolysis of ATP coupled with the exchange of H<sup>+</sup> and K<sup>+</sup> ions across the plasma membrane. ATP12A is responsible for potassium absorption in various tissues. Expression of ATP12A is increased in benign prostate hyperplasia and tumor tissues.

## Storage

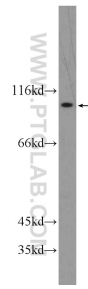
**Storage:**  
Store at -20°C. Stable for one year after shipment.  
**Storage Buffer:**  
PBS with 0.02% sodium azide and 50% glycerol pH 7.3.  
Aliquoting is unnecessary for -20°C storage

\*\*\* 20ul sizes contain 0.1% BSA

For technical support and original validation data for this product please contact:  
T: 1 (888) 4PTGLAB (1-888-478-4522) (toll free in USA), or 1(312) 455-8498 (outside USA) E: proteintech@ptglab.com W: ptglab.com

This product is exclusively available under Proteintech Group brand and is not available to purchase from any other manufacturer.

## Selected Validation Data



HEK-293 cells were subjected to SDS PAGE followed by western blot with 13231-1-AP (ATP12A Antibody) at dilution of 1:500 incubated at room temperature for 1.5 hours.