

For Research Use Only

SERCA3 Polyclonal antibody

Catalog Number: 13619-1-AP **3 Publications**



Basic Information

Catalog Number: 13619-1-AP	GenBank Accession Number: BC035729	Purification Method: Antigen affinity purification
Size: 150ul, Concentration: 300 µg/ml by Nanodrop and 233 µg/ml by Bradford method using BSA as the standard;	GeneID (NCBI): 489	Recommended Dilutions: WB 1:2000-1:12000 IP 0.5-4.0 ug for 1.0-3.0 mg of total protein lysate IHC 1:20-1:200
Source: Rabbit	UNIPROT ID: Q93084	
Isotype: IgG	Full Name: ATPase, Ca ⁺⁺ transporting, ubiquitous	
Immunogen Catalog Number: AG4527	Calculated MW: 1043 aa, 114 kDa	
	Observed MW: 97-110 kDa	

Applications

Tested Applications: WB, IP, IHC, ELISA	Positive Controls: WB : mouse heart tissue, K-562 cells IP : mouse skeletal muscle tissue, IHC : human pancreas cancer tissue,
Cited Applications: WB, IHC	
Species Specificity: human, mouse, rat	
Cited Species: human, mouse	
Note-IHC: suggested antigen retrieval with TE buffer pH 9.0; (*) Alternatively, antigen retrieval may be performed with citrate buffer pH 6.0	

Background Information

The SERCA, which pumps cytosolic Ca²⁺ into the ER, is an imperative maintainer of ER Ca²⁺ homeostasis. The mammalian SERCA family is comprised of three tissue-specific members, SERCA1-3. SERCA3 is present in endothelial and epithelial cells of various tissues. SERCA3 helps regulate intracellular Ca²⁺, which is critical for maintaining normal INS secretion and is closely linked to metabolism, neuronal plasticity, gene transcription, cell growth, differentiation, apoptosis, protein folding and carcinogenesis. Several isoforms of SERCA3 exist due to the alternative splicing.

Notable Publications

Author	Pubmed ID	Journal	Application
Minmin Fan	36561988	Acta Pharm Sin B	WB
Hengjiang Guo	28066247	Front Pharmacol	WB
Xi Shao	38291059	Nat Commun	IHC, WB

Storage

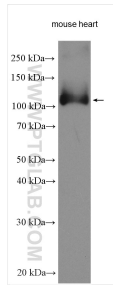
Storage:
Store at -20°C. Stable for one year after shipment.
Storage Buffer:
PBS with 0.02% sodium azide and 50% glycerol pH 7.3.
Aliquoting is unnecessary for -20°C storage

*** 20ul sizes contain 0.1% BSA

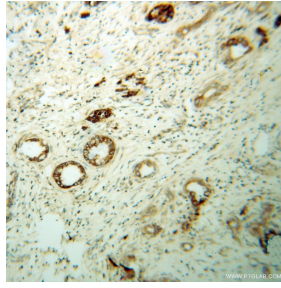
For technical support and original validation data for this product please contact:
T: 1 (888) 4PTGLAB (1-888-478-4522) (toll free in USA), or 1(312) 455-8498 (outside USA)
E: proteintech@ptglab.com
W: ptglab.com

This product is exclusively available under Proteintech Group brand and is not available to purchase from any other manufacturer.

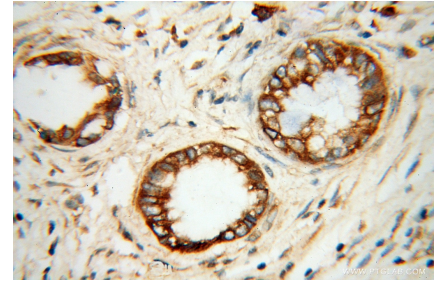
Selected Validation Data



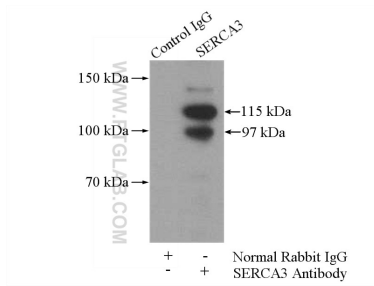
Mouse heart lysates were subjected to SDS PAGE followed by western blot with 13619-1-AP (SERCA3 antibody) at dilution of 1:6000 incubated at room temperature for 1.5 hours.



Immunohistochemical analysis of paraffin-embedded human pancreas cancer using 13619-1-AP (SERCA3 antibody) at dilution of 1:100 (under 10x lens).



Immunohistochemical analysis of paraffin-embedded human pancreas cancer using 13619-1-AP (SERCA3 antibody) at dilution of 1:100 (under 40x lens).



IP result of anti-SERCA3 (IP:13619-1-AP, 4 μ g; Detection:13619-1-AP 1:500) with mouse skeletal muscle tissue lysate 3600 μ g.