

For Research Use Only

GLRA2 Polyclonal antibody

Catalog Number: 13831-1-AP



Basic Information

Catalog Number: 13831-1-AP	GenBank Accession Number: BC032864	Purification Method: Antigen affinity purification
Size: 150ul , Concentration: 300 µg/ml by Nanodrop and 153 µg/ml by Bradford method using BSA as the standard;	GeneID (NCBI): 2742	Recommended Dilutions: WB 1:500-1:1000 IHC 1:20-1:200
Source: Rabbit	UNIPROT ID: P23416	
Isotype: IgG	Full Name: glycine receptor, alpha 2	
Immunogen Catalog Number: AG4743	Calculated MW: 452 aa, 52 kDa	
	Observed MW: 48 kDa	

Applications

Tested Applications:

IHC, WB, ELISA

Species Specificity:

human, mouse, rat

Note-IHC: suggested antigen retrieval with TE buffer pH 9.0; (*) Alternatively, antigen retrieval may be performed with citrate buffer pH 6.0

Positive Controls:

WB : PBMC cells, K-562 cells

IHC : mouse brain tissue,

Background Information

Glycine is an inhibitory neurotransmitter in the central nervous system. The glycine receptor (GlyR) is a member of the nicotinic acetylcholine receptor of ligand-gated ion channels. This receptor has important roles in a variety of physiological processes, especially in mediating inhibitory neurotransmission in the spinal cord and brain stem. GlyR is a pentameric receptor comprised of alpha and beta subunits. Four alpha-subunits (GLRA1, GLRA2, GLRA3, GLRA4) and one beta-subunit (GLRB) of GlyR have been identified. (PMID: 11409700; 15383648)

Storage

Storage:

Store at -20°C. Stable for one year after shipment.

Storage Buffer:

PBS with 0.02% sodium azide and 50% glycerol pH 7.3.

Aliquoting is unnecessary for -20°C storage

*** 20ul sizes contain 0.1% BSA

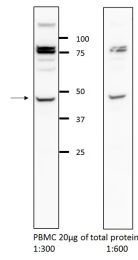
For technical support and original validation data for this product please contact:

T: 1 (888) 4PTGLAB (1-888-478-4522) (toll free in USA), or 1(312) 455-8498 (outside USA)

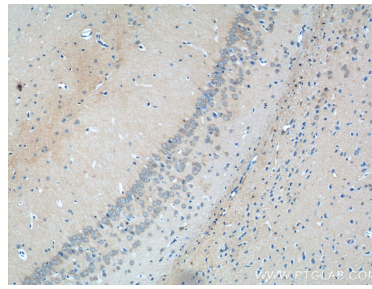
E: proteintech@ptglab.com
W: ptglab.com

This product is exclusively available under Proteintech Group brand and is not available to purchase from any other manufacturer.

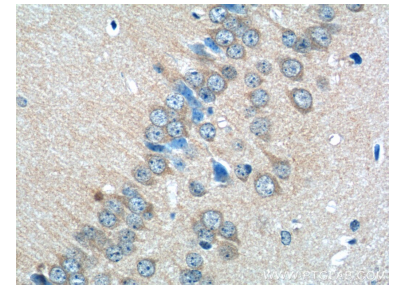
Selected Validation Data



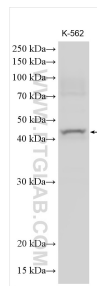
WB result of GLRA2 antibody (13831-1-AP, 1:600) with PBMC cells. Proteintech α GLRA2 13831-1-AP in 10% BSA / TBS 0.05% Tween-20 O/N @ 4°C Goat anti-rabbit HRP 1:10000 in 5% milk / TBS 0.05% Tween-20 1h @ RT.



Immunohistochemical analysis of paraffin-embedded mouse brain tissue slide using 13831-1-AP (GLRA2 Antibody) at dilution of 1:50 (under 10x lens).



Immunohistochemical analysis of paraffin-embedded mouse brain tissue slide using 13831-1-AP (GLRA2 Antibody) at dilution of 1:50 (under 40x lens).



Various lysates were subjected to SDS PAGE followed by western blot with 13831-1-AP (GLRA2 antibody) at dilution of 1:600 incubated at room temperature for 1.5 hours.