

For Research Use Only

ATP6V1A Polyclonal antibody

Catalog Number: 17115-1-AP

Featured Product

32 Publications



Basic Information

Catalog Number: 17115-1-AP	GenBank Accession Number: BC013138	Purification Method: Antigen affinity purification
Size: 150ul , Concentration: 350 µg/ml by Nanodrop;	GeneID (NCBI): 523	Recommended Dilutions: WB 1:2000-1:16000 IP 0.5-4.0 ug for IP and 1:500-1:1000 for WB
Source: Rabbit	Full Name: ATPase, H ⁺ transporting, lysosomal 70kDa, V1 subunit A	IHC 1:20-1:200
Isotype: IgG	Calculated MW: 617 aa, 68 kDa	
Immunogen Catalog Number: AG10801	Observed MW: 68 kDa	

Applications

Tested Applications:

IHC, IP, WB, ELISA

Cited Applications:

IF, IHC, IP, WB

Species Specificity:

human, mouse, rat

Cited Species:

human, rat, mouse, zebrafish, pig

Note-IHC: suggested antigen retrieval with TE buffer pH 9.0; (*) Alternatively, antigen retrieval may be performed with citrate buffer pH 6.0

Positive Controls:

WB: A431 cells, HeLa cells, human placenta tissue, mouse kidney tissue, Daudi cells, HepG2 cells, K-562 cells, U-87 MG cells, mouse testis tissue, rat testis tissue

IP: HeLa cells,

IHC: human pancreas tissue, human thyroid cancer tissue

Background Information

The vacuolar-type H(+)-ATPase (V-ATPase) is responsible for the acidification of endosomes, lysosomes, and other intracellular organelles. It is also involved in hydrogen ion transport across the plasma membrane into the extracellular space. The V-ATPase is a multisubunit complex with cytosolic and transmembrane domains. The cytosolic catalytic domain consists of 3 A subunits and 3 B subunits, which bind and hydrolyze ATP, as well as regulatory accessory subunits. ATP6V1A is V-type proton ATPase catalytic subunit A.

Notable Publications

Author	Pubmed ID	Journal	Application
Ki-Ryeong Kim	36246521	Front Cell Neurosci	WB
Beiwu Lan	36116558	Exp Cell Res	WB
A Pérez-Cañamás	27620840	Mol Psychiatry	WB

Storage

Storage:

Store at -20°C. Stable for one year after shipment.

Storage Buffer:

PBS with 0.02% sodium azide and 50% glycerol pH 7.3.

Aliquoting is unnecessary for -20°C storage

*** 20ul sizes contain 0.1% BSA

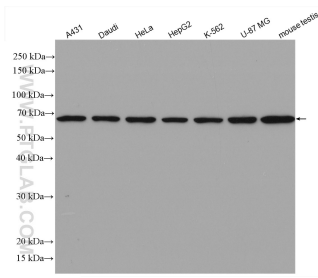
For technical support and original validation data for this product please contact:

T: 1 (888) 4PTGLAB (1-888-478-4522) (toll free in USA), or 1(312) 455-8498 (outside USA)

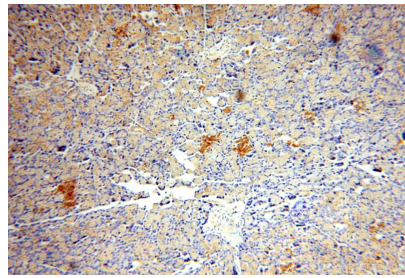
E: proteintech@ptglab.com
W: ptglab.com

This product is exclusively available under Proteintech Group brand and is not available to purchase from any other manufacturer.

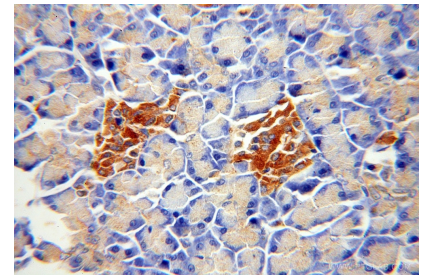
Selected Validation Data



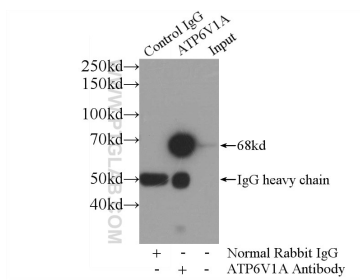
Various lysates were subjected to SDS PAGE followed by western blot with 17115-1-AP (ATP6V1A antibody) at dilution of 1:8000 incubated at room temperature for 1.5 hours.



Immunohistochemical analysis of paraffin-embedded human pancreas using 17115-1-AP (ATP6V1A antibody) at dilution of 1:100 (under 10x lens).



Immunohistochemical analysis of paraffin-embedded human pancreas using 17115-1-AP (ATP6V1A antibody) at dilution of 1:100 (under 40x lens).



IP Result of anti-ATP6V1A (IP:17115-1-AP, 4 μ g; Detection:17115-1-AP 1:500) with HeLa cells lysate 4000 μ g.