

For Research Use Only

RYR2 Polyclonal antibody

Catalog Number: 19765-1-AP **22 Publications**



Basic Information

Catalog Number: 19765-1-AP	GenBank Accession Number: NM_001035	Purification Method: Antigen affinity purification
Size: 150ul , Concentration: 450 µg/ml by Nanodrop;	GeneID (NCBI): 6262	Recommended Dilutions: IHC 1:100-1:400 IF 1:50-1:500
Source: Rabbit	UNIPROT ID: Q92736	
Isotype: IgG	Full Name: ryanodine receptor 2 (cardiac)	
	Calculated MW: 565 kDa	

Applications

Tested Applications: IF, IHC, ELISA	Positive Controls: IHC : human heart tissue, human brain tissue, human placenta tissue, human skeletal muscle tissue IF : mouse heart tissue, HEK-293 cells
Cited Applications: IF, IHC	
Species Specificity: human, mouse	
Cited Species: human, rat, mouse	
Note-IHC: suggested antigen retrieval with TE buffer pH 9.0; (*) Alternatively, antigen retrieval may be performed with citrate buffer pH 6.0	

Background Information

RYR2 belongs to the ryanodine receptor family. RYR2 provides communication between transverse-tubules and sarcoplasmic reticulum. Contraction of cardiac muscle is triggered by release of calcium ions from SR following depolarization of T-tubules. Defects in RYR2 are the cause of familial arrhythmogenic right ventricular dysplasia type 2 (ARVD2) which known as arrhythmogenic right ventricular cardiomyopathy 2 (ARVC2). Defects in RYR2 are the cause of catecholaminergic polymorphic ventricular tachycardia type 1 (CPVT1) which known as stress-induced polymorphic ventricular tachycardia (VTSIP). This antibody detects a band at ~250 kDa which has been reported (PMID: 22962011).

Notable Publications

Author	Pubmed ID	Journal	Application
Yi-Hsin Chan	31558158	Cardiovasc Diabetol	
Yung-Hsin Yeh	27562817	Basic Res Cardiol	
Miao Chen	34708083	Front Cardiovasc Med	

Storage

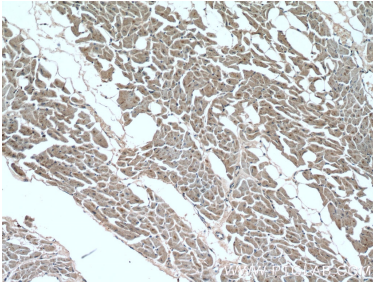
Storage:
Store at -20°C. Stable for one year after shipment.
Storage Buffer:
PBS with 0.02% sodium azide and 50% glycerol pH 7.3.
Aliquoting is unnecessary for -20°C storage

*** 20ul sizes contain 0.1% BSA

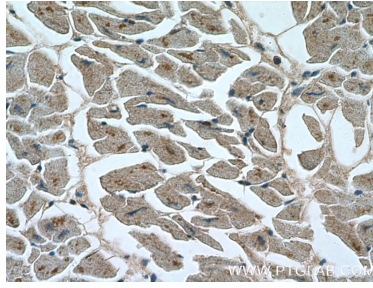
For technical support and original validation data for this product please contact:
T: 1 (888) 4PTGLAB (1-888-478-4522) (toll free in USA), or 1(312) 455-8498 (outside USA)
E: proteintech@ptglab.com
W: ptglab.com

This product is exclusively available under Proteintech Group brand and is not available to purchase from any other manufacturer.

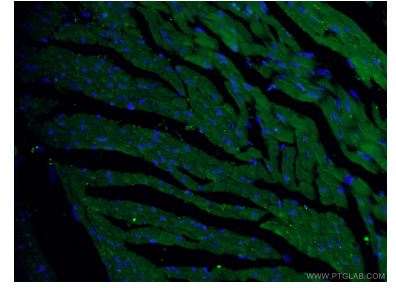
Selected Validation Data



Immunohistochemical analysis of paraffin-embedded human heart tissue slide using 19765-1-AP (Ryanodine Receptor 2 antibody) at dilution of 1:200 (under 10x lens).



Immunohistochemical analysis of paraffin-embedded human heart tissue slide using 19765-1-AP (Ryanodine Receptor 2 antibody) at dilution of 1:200 (under 40x lens).



Immunofluorescent analysis of (4% PFA) fixed mouse heart tissue using 19765-1-AP (Ryanodine Receptor 2 antibody) at dilution of 1:50 and Alexa Fluor 488-conjugated AffiniPure Goat Anti-Rabbit IgG(H+L).