

For Research Use Only

ATP1A2-Specific Polyclonal antibody



Catalog Number: 55179-1-AP

Featured Product

2 Publications

Basic Information

Catalog Number: 55179-1-AP	GenBank Accession Number: NM_000702	Purification Method: Antigen affinity purification
Size: 150ul , Concentration: 350 µg/ml by Nanodrop and 133 µg/ml by Bradford method using BSA as the standard;	GeneID (NCBI): 477	Recommended Dilutions: WB 1:500-1:1000 IP 0.5-4.0 ug for IP and 1:500-1:1000 for WB
Source: Rabbit	Full Name: ATPase, Na ⁺ /K ⁺ transporting, alpha 2 (+) polypeptide	IHC 1:20-1:200
Isotype: IgG	Calculated MW: 112 kDa	
	Observed MW: 100 kDa	

Applications

Tested Applications:

IHC, IP, WB, ELISA

Cited Applications:

IF, WB

Species Specificity:

human, mouse

Cited Species:

mouse, rat

Note-IHC: suggested antigen retrieval with TE buffer pH 9.0; (*) Alternatively, antigen retrieval may be performed with citrate buffer pH 6.0

Positive Controls:

WB : mouse brain tissue, human brain tissue

IP : mouse brain tissue,

IHC : human skeletal muscle tissue, mouse heart tissue

Background Information

ATP1A2, also named as KIAA0778, belongs to the cation transport ATPase (P-type) family and Type IIC subfamily. It is the catalytic component of the active enzyme, which catalyzes the hydrolysis of ATP coupled with the exchange of sodium and potassium ions across the plasma membrane. Defects in ATP1A2 are the cause of familial hemiplegic migraine type 2 (FHM2). Defects in ATP1A2 are a cause of alternating hemiplegia of childhood (AHC). This antibody is specific to ATP1A2.

Notable Publications

Author	Pubmed ID	Journal	Application
Jens Hammann	29880193	Cell Calcium	WB,IF
Valentina Tedeschi	34995919	Cell Calcium	WB

Storage

Storage:

Store at -20°C. Stable for one year after shipment.

Storage Buffer:

PBS with 0.02% sodium azide and 50% glycerol pH 7.3.

Aliquoting is unnecessary for -20°C storage

*** 20ul sizes contain 0.1% BSA

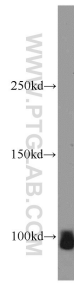
For technical support and original validation data for this product please contact:

T: 1 (888) 4PTGLAB (1-888-478-4522) (toll free in USA), or 1(312) 455-8498 (outside USA)

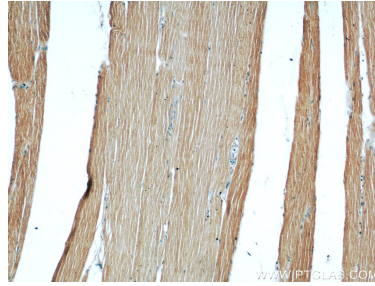
E: proteintech@ptglab.com
W: ptglab.com

This product is exclusively available under Proteintech Group brand and is not available to purchase from any other manufacturer.

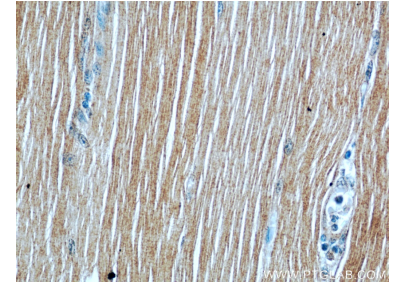
Selected Validation Data



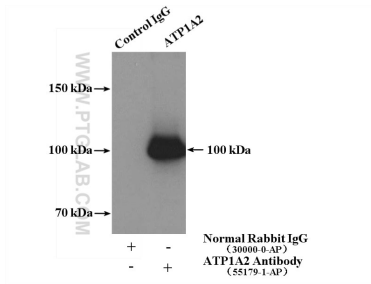
mouse brain tissue were subjected to SDS PAGE followed by western blot with 55179-1-AP (ATP1A2-Specific antibody) at dilution of 1:800 incubated at room temperature for 1.5 hours.



Immunohistochemical analysis of paraffin-embedded human skeletal muscle using 55179-1-AP (ATP1A2-Specific antibody) at dilution of 1:50 (under 10x lens).



Immunohistochemical analysis of paraffin-embedded human skeletal muscle using 55179-1-AP (ATP1A2-Specific antibody) at dilution of 1:50 (under 40x lens).



IP Result of anti-ATP1A2-Specific (IP:55179-1-AP, 4ug; Detection:55179-1-AP 1:800) with mouse brain tissue lysate 4000ug.